



Kantonsspital
St.Gallen



Inhaltsverzeichnis

Departement I	5
Allgemeine Innere Medizin/Hausarztmedizin.....	5
Angiologie	6
Endokrinologie/Diabetologie.....	6
Gastroenterologie/Hepatology.....	7
Infektiologie/Spitalhygiene	8
Kardiologie.....	10
Onkologie/Hämatologie.....	12
Pneumologie/Schlafmedizin	18
Rheumatologie.....	19
Departement II	20
Anästhesiologie/Intensivmedizin	20
Klinik für Allgemein-, Viszeral- und Transplantationschirurgie	20
Klinik für Gefässchirurgie	23
Frauenklinik	23
Klinik für Orthopädische Chirurgie.....	24
Klinik für Urologie.....	26
Departement III	30
Augenklinik	30
Hals-Nasen-Ohrenklinik	30
Neurochirurgie	32
Neurologie	33
Departement IV.....	36
Pathologie.....	36
Radiologie und Nuklearmedizin.....	38
Radio-Onkologie	39
Rechtsmedizin	40
Departement Interdisziplinäre Med. Dienste.....	42
Zentrale Notfallaufnahme.....	42
Dermatologie/Allergologie.....	42
Brustzentrum	43
Muskelzentrum/ALS clinic.....	46
Institut für Immunbiologie	46
Clinical Trials Unit	47
Zentrum für Integrative Medizin.....	48

Kantonsspital St.Gallen – Publikationen

Am Kantonsspital St.Gallen (KSSG) wird aktiv und erfolgreich geforscht. Die Forschungsergebnisse werden in wissenschaftlichen Journalen veröffentlicht und sind damit für Fachpersonen und die Allgemeinheit zugänglich. Durch die zentralisierte Erfassung in der Forschungs- und Studiendatenbank des KSSG (www.forschung.kssg.ch) (seit 2009) und der bibliometrischen Auswertung (seit 2007) der Publikationen kann die konstant hohe Leistung der Forschenden am KSSG aufgezeigt werden. Die Forschungs- und Studiendatenbank ist damit das Aushängeschild für Forschung und Entwicklung am KSSG.

2015 wurden 349 Publikationen mit Beteiligung von Forschenden des KSSG veröffentlicht. 258 dieser Arbeiten wurden in Journalen mit Impact-Faktor publiziert (Abb. 1). Der Impact-Faktor einer Fachzeitschrift gibt an, wie oft ein Artikel aus dieser Zeitschrift von anderen Forschenden zitiert wird. Für die Berechnung des mittleren Impact-Faktors der Publikationen des Kantonsspital St.Gallen, wurden Daten des Journal Citation Reports® aus dem Jahr 2014 verwendet.

Die Auswertung der Publikationen des Jahres 2015 mit Impact Faktor ergab einen mittleren Impact-Faktor von 4.8 pro Publikation. In Abb. 2 sind die Werte der Jahre 2013-2015 gezeigt.

Die Auswertung der Publikationsdaten nach Medizinischen Departementen zeigt (Abb. 3), dass in allen Disziplinen intensiv geforscht und publiziert wird. Grosse Departemente, wie die Innere Medizin (Med.Dept. I), steuern den Grossteil der Publikationen bei. In Abbildung 3 ist die Publikationstätigkeit der Jahre 2013 – 2015 in den einzelnen Departementen gezeigt. Detaillierte Auswertungen können beim Medizinischen Forschungszentrum angefordert werden.

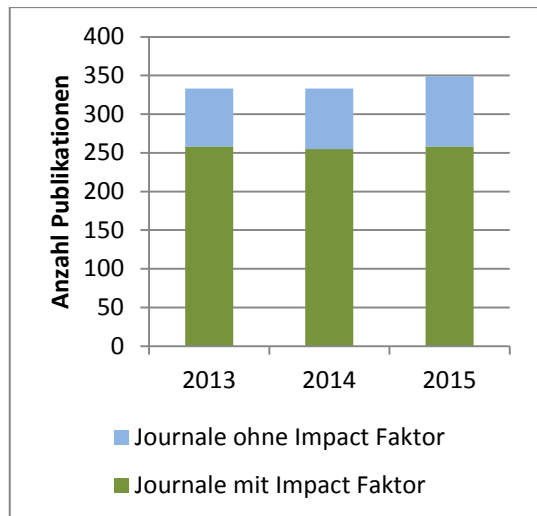


Abb. 1. Anzahl der Publikationen in Journalen mit oder ohne Impact-Faktor in den Jahren 2013 – 2015

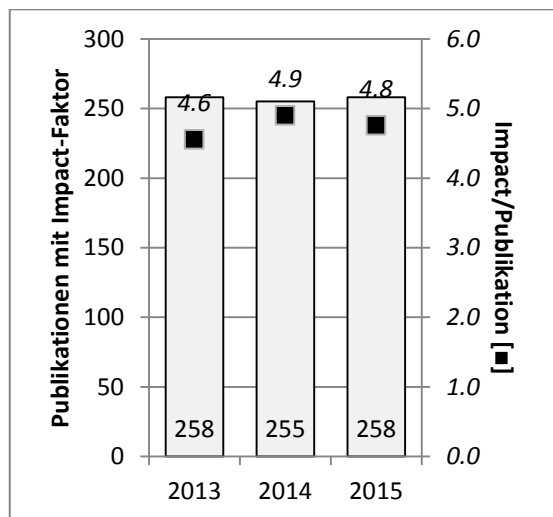


Abb. 2. Mittlere Qualität der Publikationen gemessen als durchschnittlicher Impact-Faktor pro Veröffentlichung.

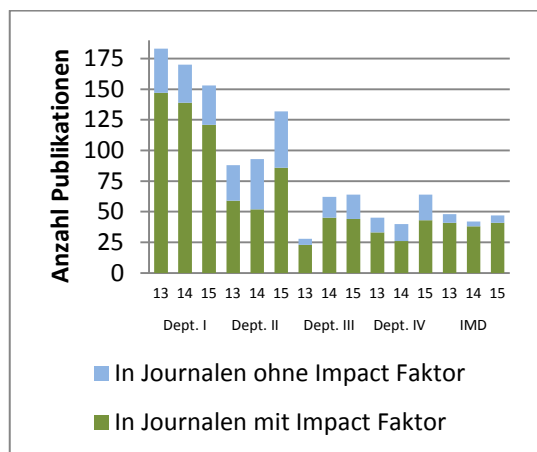


Abb. 3. Publikationsstatistik in den Departementen I-IV und IMD in den Jahren 2013 – 2015.

Die Publikationen wurden direkt aus der Forschungs- und Studiendatenbank des KSSG extrahiert (www.forschung.kssg.ch). Für die Vollständigkeit und Richtigkeit der Publikationen in der Datenbank tragen die Fachbereiche die Verantwortung. Durch Anklicken des Bereichs/Instituts wird man direkt auf die Publikationen in der Datenbank verlinkt.

Wissenschaftliche Artikel

1. Brändle M. Ein Sturz mit Folgen - Posttraumatischer Panhypopituitarismus. Swiss Medical Forum 2015; 15:303-305.
2. Brändle M. Hyperglykämische Notfallsituationen beim Erwachsenen : Diabetische Ketoazidose und hyperosmolare hyperglykämie Entgleisung. Swiss Medical Forum 2015; 15:723-728.
3. Brändle M. Was ist die Ursache der Hyponatriämie? Swiss Medical Forum 2015; 15:..
4. Gerber P A, Locher R, Zuellig R A, Tschopp O, Ajdler-Schaeffler E, Kron P, Oberkofler C, Brändle M, Spinass G A, Lehmann R. Glycemia, Hypoglycemia, and Costs of Simultaneous Islet-Kidney or Islet After Kidney Transplantation Versus Intensive Insulin Therapy and Waiting List for Islet Transplantation. Transplantation 2015; 99:2174-80.
5. Grouzmann E, Tschopp O, Triponez F, Matter M, Bilz S, Brändle M, Drescher T, Sigrist S, Zulewski H, Henzen C, Fischli S, Abid K. Catecholamine metabolism in paraganglioma and pheochromocytoma: similar tumors in different sites? PLoS ONE 2015; 10:e0125426.
6. Häuptle C. Koordination von Curricula (Rotationsstellen) und Praxisassistentenstellen : Bericht der Stiftung zur Förderung der Weiterbildung in Hausarztmedizin (WHM) zuhanden Bundesamt für Gesundheit (BAG) und Schweizerische Konferenz der kantonalen Gesundheitsdirektorinnen und -direktoren (GDK), Bern, 27. Mai 2014. Praxis 2015; 104:137-150.
7. Lipowsky C, Sze L, Krull I, Brändle M. Liraglutide as add-on therapy to insulin in type 2 diabetes mellitus: a retrospective, observational study from a daily clinical practice setting in Switzerland. Diabetes Ther 2015; 6:41-7.
8. Niederer-Wuest S, Jochum W, Förbs D, Brändle M, Bilz S, Clerici T, Oettli R, Müller J, Haile S, Ess S, Stöckli S, Broglio Däppen M. Impact of clinical risk scores and BRAF V600E mutation status on outcome in papillary thyroid cancer. Surgery 2015; 157:119-25.
9. Sawatzki M, Haller C, Henz S. Jaundice after Herbage Walking Tour of a 44 Year Old Man. Praxis Schweizerische Rundschau für Medizin 2015; 104:635-637.
10. Valentine W J, Curtis B H, Pollock R F, Van Brunt K, Paczkowski R, Brändle M, Boye K S, Kendall D M. Is the current standard of care leading to cost-effective outcomes for patients with type 2 diabetes requiring insulin? A long-term health economic analysis for the UK. Diabetes Res Clin Pract 2015; 109:95-103.
11. Ye W, Brändle M, Brown M B, Herman W H. The Michigan Model for Coronary Heart Disease in Type 2 Diabetes: Development and Validation. Diabetes Technol Ther 2015; 17:701-11.

Angiologie

Wissenschaftliche Artikel

1. Baumer A, Beckmann M. Der hustende Fallfuss : Wie aus einer Pneumonie eine Systemerkrankung wurde. Swiss Medical Forum 2015; 2015 15:210-2011.
2. Beckmann M, Jacomella V, Kohler M, Lachat M, Salem A, Amann-Vesti B, Husmann M. Risk Stratification of Patients with Peripheral Arterial Disease and Abdominal Aortic Aneurysm Using Aortic Augmentation Index. PLoS ONE 2015; 10:e0139887.

Endokrinologie/Diabetologie

Wissenschaftliche Artikel

1. Brändle M. Ein Sturz mit Folgen - Posttraumatischer Panhypopituitarismus. Swiss Medical Forum 2015; 15:303-305.
2. Brändle M. Hyperglykämische Notfallsituationen beim Erwachsenen : Diabetische Ketoazidose und hyperosmolare hyperglykämie Entgleisung. Swiss Medical Forum 2015; 15:723-728.
3. Brändle M. Was ist die Ursache der Hyponatriämie? Swiss Medical Forum 2015; 15.
4. Gerber P A, Locher R, Zuellig R A, Tschopp O, Ajdler-Schaeffler E, Kron P, Oberkofler C, Brändle M, Spinass G A, Lehmann R. Glycemia, Hypoglycemia, and Costs of Simultaneous Islet-Kidney or Islet After Kidney Transplantation Versus Intensive Insulin Therapy and Waiting List for Islet Transplantation. Transplantation 2015; 99:2174-80.
5. Grouzmann E, Tschopp O, Triponez F, Matter M, Bilz S, Brändle M, Drescher T, Sigrist S, Zulewski H, Henzen C, Fischli S, Abid K. Catecholamine metabolism in paraganglioma and pheochromocytoma: similar tumors in different sites? PLoS ONE 2015; 10:e0125426.
6. Lipowsky C, Sze L, Krull I, Brändle M. Liraglutide as add-on therapy to insulin in type 2 diabetes mellitus: a retrospective, observational study from a daily clinical practice setting in Switzerland. Diabetes Ther 2015; 6:41-7.
7. Niederer-Wuest S, Jochum W, Förbs D, Brändle M, Bilz S, Clerici T, Oettli R, Müller J, Haile S, Ess S, Stöckli S, Broglio Däppen M. Impact of clinical risk scores and BRAF V600E mutation status on outcome in papillary thyroid cancer. Surgery 2015; 157:119-25.
8. Sigrist S. Hyperglykämische Notfallsituationen beim Erwachsenen. Schweiz Med Forum 2015;15(33):723-728 2015.
9. Valentine W J, Curtis B H, Pollock R F, Van Brunt K, Paczkowski R, Brändle M, Boye K S, Kendall D M. Is the current standard of care leading to cost-effective outcomes for patients with type 2 diabetes requiring insulin? A long-term health economic analysis for the UK. Diabetes Res Clin Pract 2015; 109:95-103.

10. Ye W, Brändle M, Brown M B, Herman W H. The Michigan Model for Coronary Heart Disease in Type 2 Diabetes: Development and Validation. *Diabetes Technol Ther* 2015; 17:701-11.

Gastroenterologie/Hepatologie

Wissenschaftliche Artikel

1. Barthel C, Wiegand S, Scharl S, Scharl M, Frei P, Vavricka S R, Fried M, Sulz M, Wiegand N, Rogler G, Biedermann L. Patients' perceptions on the impact of coffee consumption in inflammatory bowel disease: friend or foe?--a patient survey. *Nutr J* 2015; 14:78.
2. Bernsmeier C, Singanayagam A, Patel V C, Wendon J, Antoniades C G. Immunotherapy in the treatment and prevention of infection in acute-on-chronic liver failure. *Immunotherapy* 2015; 7:641-54.
3. Bernsmeier C, Weisskopf D M, Pflueger M O, Mosimann J, Campana B, Terracciano L, Beglinger C, Heim M H, Cajochen C. Sleep Disruption and Daytime Sleepiness Correlating with Disease Severity and Insulin Resistance in Non-Alcoholic Fatty Liver Disease: A Comparison with Healthy Controls. *PLoS ONE* 2015; 10:e0143293.
4. Bruggmann P, Negro F, Bihl F, Blach S, Lavanchy D, Müllhaupt B, Razavi H, Semela D. Birth cohort distribution and screening for viraemic hepatitis C virus infections in Switzerland. *Swiss Med Wkly* 2015; 145:w14221.
5. Krieger-Grübel C, Tutuian R, Borovicka J. Correlation of esophageal clearance and dysphagia symptom assessment after treatment for achalasia. *United European Gastroenterology Journal* 2015; 0:1-7.
6. Larsen F S, Schmidt L E, Bernsmeier C, Rasmussen A, Isoniemi H, Patel V C, Triantafyllou E, Bernal W, Auzinger G, Shawcross D, Eefsen M, Bjerring P N, Clemmesen J O, Hockerstedt K, Frederiksen H J, Hansen B A, Antoniades C G, Wendon J. High-volume plasma exchange in patients with acute liver failure: An open randomised controlled trial. *J Hepatol* 2015; 64:69-78.
7. Meyer-Herbon P, Brugnolaro C, Frei R, Sulz M. Pyogenic Granuloma of the Descending Colon: A Rare Cause of Lower Gastrointestinal Bleeding. *ACG Case Rep J* 2015; 2:74-5.
8. Müller-Stich B P, Linke G R, Senft J, Achtstätter V, Müller P C, Diener M K, Warschkow R, Marra F, Schmied B M, Borovicka J, Fischer L, Zerz A, Gutt C N, Büchler M W. Laparoscopic Mesh-augmented Hiatoptasty With Cardiophrenicopexy Versus Laparoscopic Nissen Fundoplication for the Treatment of Gastroesophageal Reflux Disease: A Double-center Randomized Controlled Trial. *Ann Surg* 2015; 262:721-7.
9. Müllhaupt B, Bruggmann P, Bihl F, Blach S, Lavanchy D, Razavi H, Semela D, Negro F. Modeling the Health and Economic Burden of Hepatitis C Virus in Switzerland. *PLoS ONE* 2015; 10:e0125214.
10. Sawatzki M, Borovicka J, Meyenberger C, Frei R. Stenting after severe iatrogenic submucosal. *Gastrointestinal Endoscopy* 2015;1499-1501.

11. Sawatzki M, Brunner W, Neff-Schöb A, Meyenberger C, Borovicka J. Chronische Nausea und Emesis. *Swiss Medical Forum* 2015; 15:1039-1040.
12. Sawatzki M, Haller C, Henz S. Jaundice after Herbage Walking Tour of a 44 Year Old Man. *Praxis Schweizerische Rundschau für Medizin* 2015; 104:635-637.
13. Sawatzki M, Meyenberger C, Frei R. Prospective Swiss pilot study of Endocuff-assisted. *Endoscopy International Open* 2015;1-5.
14. Staubli S, Gramann T, Schwab C, Semela D, Hechelhammer L, Engeler D, Schmid H P, Abt D, Mordasini L. Life-threatening bleeding from peristomal varices after cystoprostatectomy: multimodal approach in a cirrhotic, encephalopathic patient with severe portal hypertension. *Case Rep Urol* 2015; 2015:785010.
15. Sulz M, Frei R, Semadeni G M, Sawatzki M, Borovicka J, Meyenberger C. The role of single-balloon colonoscopy for patients with previous incomplete standard colonoscopy: Is it worth doing it? *Surg Endosc* 2015;.
16. Terczyńska-Dyla E, Bibert S, Duong F H T, Krol I, Jørgensen S, Collinet E, Kutalik Z, Aubert V, Cerny A, Kaiser L, Malinverni R, Mangia A, Moradpour D, Müllhaupt B, Negro F, Santoro R, Semela D, Semmo N, Swiss Hepatitis C Cohort Study Group , Heim M H, Bochud P Y, Hartmann R. Corrigendum: reduced IFN λ 4 activity is associated with improved HCV clearance and reduced expression of interferon-stimulated genes. *Nat Commun* 2015; 6:7280.
17. Wang H, El Maadidi S, Fischer J, Grabski E, Dickhöfer S, Klimosch S, Flannery S M, Filomena A, Wolz O O, Schneiderhan-Marra N, Löffler M W, Wiese M, Pichulik T, Müllhaupt B, Semela D, Dufour J F, Bochud P Y, Bowie A G, Kalinke U, Berg T, Weber A N R, East-German and Swiss Hepatitis C Virus Study Groups . A frequent hypofunctional IRAK2 variant is associated with reduced spontaneous hepatitis C virus clearance. *Hepatology* 2015; 62:1375-87.

Infektiologie/Spitalhygiene

Wissenschaftliche Artikel

1. Albrich W, Harbarth S. Pros and cons of using biomarkers versus clinical decisions in start and stop decisions for antibiotics in the critical care setting. *Intensive Care Med* 2015;41:1739-51.
2. Anagnostopoulos A, Ledergerber B, Jaccard R, Dietler S A, Stoeckle M, Bernasconi E, Barth J, Calmy A, Berney A, Jenewein J, Weber R, Swiss HIV Cohort Study . Frequency of and Risk Factors for Depression among Participants in the Swiss HIV Cohort Study (SHCS). *PLoS ONE* 2015; 10:e0140943.
3. Aouri M, Barcelo C, Ternon B, Cavassini M, Anagnostopoulos A, Yerly S, Henry H, Vernazza P, Günthard H F, Buclin T, Telenti A, Rotger M, Decosterd L A. In Vivo Profiling and Distribution of Known and Novel Phase I and Phase II Metabolites of Efavirenz in Plasma, Urine and Cerebro-Spinal Fluid. *Drug Metab Dispos* 2015;.

4. Berger C, Bochud P Y, Boggian K, Cusini A, Egli A, Garzoni C, Hirsch H H, Hoffmann M, Khanna N, Manuel O, Meylan P, Nadal D, van Delden C, Weisser M, Mueller N J, Transplant Infectious Diseases Working Group, Swiss Transplant Cohort Study . The swiss transplant cohort study: lessons from the first 6 years. *Curr Infect Dis Rep* 2015; 17:486.
5. Ciaffi L, Cavassini M, Genne D, Delhumeau C, Spycher Elbes R, Hill A, Wandeler G, Fehr J, Stoeckle M, Schmid P, Hirschel B, Montecucco F, Calmy A, Swiss HIV Cohort Study . Switch to etravirine for HIV-positive patients receiving statin treatment: a prospective study. *Eur J Clin Invest* 2015;.
6. Cusini A, Nydegger D, Kaspar T, Schweiger A, Kuhn R, Marschall J. Improved hand hygiene compliance after eliminating mandatory glove use from contact precautions-Is less more? *Am J Infect Control* 2015;.
7. Drozdov D, Schwarz S, Kutz A, Grolimund E, Rast A C, Steiner D, Regez K, Schild U, Guglielmetti M, Conca A, Reutlinger B, Ottiger C, Buchkremer F, Haubitz S, Blum C, Huber A, Buergi U, Schuetz P, Bock A, Fux C A, Mueller B, Albrich W. Procalcitonin and pyuria-based algorithm reduces antibiotic use in urinary tract infections: a randomized controlled trial. *BMC Med* 2015; 13:104.
8. Giannoni E, Berger C, Stocker M, Agyeman P, Posfay-Barbe K M, Heining U, Konetzny G, Niederer-Loher A, Kahlert C R, Donas A, Leone A, Hasters P, Rely C, Baer W, Aebi C, Schlapbach L J, Swiss Pediatric Sepsis Study Group . Incidence and Outcome of Group B Streptococcal Sepsis in Infants in Switzerland. *Pediatr Infect Dis J* 2015;.
9. Gueler A, Schoeni-Affolter F, Moser A, Bertisch B, Bucher H C, Calmy A, Cavassini M, Ledergerber B, Wandeler G, Egger M, Swiss HIV Cohort Study, Swiss National Cohort . Neighbourhood socio-economic position, late presentation and outcomes in people living with HIV in Switzerland. *AIDS* 2015; 29:231-8.
10. Hurst J, Hoffmann M, Pace M, Williams J P, Thornhill J, Hamlyn E, Meyerowitz J, Willberg C, Koelsch K K, Robinson N, Brown H, Fisher M, Kinloch S, Cooper D A, Schechter M, Tambussi G, Fidler S, Babiker A, Weber J, Kelleher A D, Phillips R E, Frater J. Immunological biomarkers predict HIV-1 viral rebound after treatment interruption. *Nat Commun* 2015; 6:8495.
11. Itin P, Bosshard P P, Toutous-Trellu L, Schmidt A J, Vernazza P, Tarr P, Stoeckle M, Wyman M, Ciardo D, Class J, Scheidegger C, Low N, Oertle D, Cavassini M, Schmid P, Bernasconi E, Harry D, Boffi El Amari E, Herold M, Klimkait T, Kahlert C R, Furrer H, Lautenschlager S, Calmy A, Fehr J. Syphilis: Diagnostik und Behandlung: Aktualisierte Empfehlungen der Eidgenössischen Kommission für Sexuelle Gesundheit. *Schweizerisches Medizin-Forum* 2015; 15:459-465.
12. Joswig H, Gers B, Dollenmaier G, Heilbronner R, Strahm C. A case of *Capnocytophaga canimorsus* sacral abscess in an immunocompetent patient. *Infection* 2015; 43:217-221.

13. Kahlert C R, Bregenzer A, Gutmann C, Otterbech S, Hoffmann M, Schmid P, Vernazza P. Late treatment failures in cerebrospinal fluid in patients on long-term maintenance ART with ritonavir-boosted protease PI monotherapy. *Infection* 2015;.
14. Kohler P, Schmidt A J, Cavassini M, Furrer H, Calmy A, Battegay M, Bernasconi E, Ledergerber B, Vernazza P, and the Swiss HIV Cohort Study . The HIV care cascade in Switzerland: reaching the UNAIDS/WHO targets for patients diagnosed with HIV. *AIDS* 2015;.
15. Marzel A, Shilaih M, Yang W L, Böni J, Yerly S, Klimkait T, Aubert V, Braun D L, Calmy A, Furrer H, Cavassini M, Battegay M, Vernazza P, Bernasconi E, Günthard H F, Kouyos R D, Swiss HIV Cohort Study . HIV-1 Transmission During Recent Infection and During Treatment Interruptions as Major Drivers of New Infections in the Swiss HIV Cohort Study. *Clin Infect Dis* 2015;.
16. Perkins M R, Bartha I, Timmer J K, Liebner J C, Wollinsky D, Günthard H F, Hauser C, Bernasconi E, Hoffmann M, Calmy A, Battegay M, Telenti A, Douek D C, Fellay J, the Swiss HIV Cohort Study . The interplay between host genetic variation, viral replication and microbial translocation in untreated HIV-infected individuals. *J Infect Dis* 2015;.
17. Schmid P, Bregenzer A, Huber M, Rauch A, Jochum W, Müllhaupt B, Vernazza P, Opravil M, Weber R, Swiss HIV Cohort Study . Progression of Liver Fibrosis in HIV/HCV Co-Infection: A Comparison between Non-Invasive Assessment Methods and Liver Biopsy. *PLoS ONE* 2015; 10:e0138838.
18. Yang W L, Kouyos R D, Scherrer A U, Böni J, Shah C, Yerly S, Klimkait T, Aubert V, Hirzel C, Battegay M, Cavassini M, Bernasconi E, Vernazza P, Held L, Ledergerber B, Günthard H F, Swiss HIV Cohort Study (SHCS) , Swiss HIV Cohort Study SHCS . Assessing efficacy of different nucleos(t)ide backbones in NNRTI-containing regimens in the Swiss HIV Cohort Study. *J Antimicrob Chemother* 2015;.
19. Yang W L, Kouyos R, Scherrer A U, Böni J, Shah C, Yerly S, Klimkait T, Aubert V, Furrer H, Battegay M, Cavassini M, Bernasconi E, Vernazza P, Held L, Ledergerber B, Günthard H F, Swiss HIV Cohort Study . Assessing the Paradox Between Transmitted and Acquired HIV Type 1 Drug Resistance Mutations in the Swiss HIV Cohort Study From 1998 to 2012. *J Infect Dis* 2015;212:

Kardiologie

Wissenschaftliche Artikel

1. Ammann P, Chenevard R, Ammann P. Is a pacemaker implantation warranted in this patient? *Europace* 2015;.
2. Buser M, Felizeter-Kessler M, Lenggenhager D, Maeder M T. Rapidly progressive pulmonary hypertension in a patient with pulmonary tumor thrombotic microangiopathy. *Am J Respir Crit Care Med* 2015; 191:711-2.

3. Ehl N, Maeder M T, Jörg L. Isolated cardiac sarcoidosis: critical role of cardiac MRI for diagnosis and management. *Eur Heart J* 2015;.
4. Franzone A, Pilgrim T, Heg D, Roffi M, Tüller D, Vuilliomenet A, Muller O, Cook S, Weilenmann D, Kaiser C, Jamshidi P, Räber L, Stortecky S, Wenaweser P, Jüni P, Windecker S. Clinical outcomes according to diabetic status in patients treated with biodegradable polymer sirolimus-eluting stents versus durable polymer everolimus-eluting stents: prespecified subgroup analysis of the BIOSCIENCE trial. *Circ Cardiovasc Interv* 2015; 8:.
5. Frey S M, Sticherling C, Kraus R, Ammann P, Kühne M, Osswald S, Schaer B. Very late follow-up of a passive defibrillator lead under recall: do failure rates increase during long-term observation. *Pacing Clin Electrophysiol* 2015; 38:306-10.
6. Häfliger M, Weilenmann D, Rickli H, Maeder M T. Recurrent left anterior descending artery spasm causing transmural ischaemia treated with stenting. *Eur Heart J* 2015;.
7. Kaufmann B A, Goetschalckx K, Min S Y, Maeder M T, Bucher U, Nietlispach F, Bernheim A M, Pfisterer M E, Rocca H P B L, TIME-CHF Investigators . Improvement in left ventricular ejection fraction and reverse remodeling in elderly heart failure patients on intense NT-proBNP-guided therapy. *Int J Cardiol* 2015; 191:286-93.
8. Maeder M T, Buser M, Felizeter-Kessler M, Lenggenhager D. Reply: The Role of Immunohistochemistry in Diagnosis of Pulmonary Tumor Thrombotic Microangiopathy. *Am J Respir Crit Care Med* 2015; 192:116-7.
9. Maeder M T, Karapanagiotidis S, Dewar E M, Kaye D M. Accuracy of Echocardiographic Cardiac Index Assessment in Subjects with Preserved Left Ventricular Ejection Fraction. *Echocardiography* 2015; 32:1628-38.
10. Maeder M T, Kleiner R, Weilenmann D. Severely worsening dyspnea after initiation of macitentan therapy for pulmonary arterial hypertension. *Int J Cardiol* 2015; 202:244-5.
11. Pilgrim T, Piccolo R, Heg D, Roffi M, Tüller D, Vuilliomenet A, Muller O, Cook S, Weilenmann D, Kaiser C, Jamshidi P, Khattab A A, Taniwaki M, Rigamonti F, Nietlispach F, Blöchliger S, Wenaweser P, Jüni P, Windecker S. Biodegradable polymer sirolimus-eluting stents versus durable polymer everolimus-eluting stents for primary percutaneous coronary revascularisation of acute myocardial infarction. *EuroIntervention* 2015; 11:.
12. Rigger J, Ehl N, Nägele R, Rickli H, Maeder M T. Giant biventricular thrombi in a patient with heart failure and heparin-induced thrombocytopenia. *Int J Cardiol* 2015; 182C:377-378.
13. Rogowski S, Maeder M T, Weilenmann D, Haager P K, Ammann P, Rohner F, Jörg L, Rickli H. Spontaneous Coronary Artery Dissection: Angiographic Follow-Up and Long-Term Clinical Outcome in a Predominantly Medically Treated Population. *Catheter Cardiovasc Interv* 2015;.
14. Sanders-van Wijk S, van Empel V, Davarzani N, Maeder M T, Handschin R, Pfisterer M E, Brunner-La Rocca H P, TIME-CHF Investigators. Circulating biomarkers of distinct

- pathophysiological pathways in heart failure with preserved vs. reduced left ventricular ejection fraction. *Eur J Heart Fail* 2015; 17:1006-14.
15. Weidmann Z M, Breidthardt T, Twerenbold R, Züsli C, Nowak A, von Eckardstein A, Erne P, Rentsch K, de Oliveira M T, Gualandro D, Maeder M T, Rubini Gimenez M, Pershyna K, Stallone F, Haas L, Jaeger C, Wildi K, Puelacher C, Honegger U, Wagener M, Wittmer S, Schumacher C, Krivoshei L, Hillinger P, Osswald S, Mueller C. Prediction of mortality using quantification of renal function in acute heart failure. *Int J Cardiol* 2015; 201:650-7.
 16. Zurek M, Maeder M T, Rickli H, Muzzarelli S, Sanders-van Wijk S, Abbühl H, Handschin R, Jeker U, Pfisterer M, Brunner-La Rocca H P, TIME-CHF Investigators . Differential Prognostic Impact of Resting Heart Rate in Older Compared to Younger Patients with Chronic Heart Failure - Insights from TIME-CHF. *J Card Fail* 2015;.

Onkologie/Hämatologie

Wissenschaftliche Artikel

1. Volck AC, Siano M, Broglie Däppen M, Töpfer M, Stöckli S. Das Adenoidzystische-Karzinom. *info@onkologie.ch* 2015; 1:10-12.
2. AlHashem H Y, Al-Mubarak M, Vera-Badillo F E, Templeton A, Ocana A, Šeruga B, Amir E. Impact of Geographic Region on Benefit of Approved Anticancer Drugs Evaluated in International Phase III Clinical Trials. *Clin Oncol (R Coll Radiol)* 2015;.
3. Borg J J, Anker S D, Rosano G, Serracino-Inglott A, Strasser F. Multimodal management as requirement for the clinical use of anticachexia drugs - a regulatory and a clinical perspective. *Curr Opin Support Palliat Care* 2015; 9:333-45.
4. Cerny T. [Osteosarcomas: very rare but curable with your help]. *Praxis (Bern 1994)* 2015; 104:657.
5. Coates A S, Winer E P, Goldhirsch A, Gelber R D, Gnant M, Piccart-Gebhart M, Thürlimann B, Senn H J, Panel members . -Tailoring therapies-improving the management of early breast cancer: St Gallen International Expert Consensus on the Primary Therapy of Early Breast Cancer 2015. *Ann Oncol* 2015; 26:1533-46.
6. Davis M P, Strasser F, Cherny N. How well is palliative care integrated into cancer care? A MASCC, ESMO, and EAPC Project. *Support Care Cancer* 2015;.
7. Desax M C, Hundsberger T, Rothermundt C, Omlin A, Gillessen Sommer S. Restless Legs Syndrome—An Emerging Potential Side Effect of Enzalutamide: Report of 2 Cases. *Clin Genitourin Cancer* 2015; 13:e385-6.
8. Early Breast Cancer Trialists' Collaborative Group (EBCTCG) , Dowsett M, Forbes J F, Bradley R, Ingle J, Aihara T, Bliss J, Boccardo F, Coates A, Coombes R C, Cuzick J, Dubsky P, Gnant M, Kaufmann M, Kilburn L, Perrone F, Rea D, Thürlimann B, van de Velde C, Pan H, Peto R, Davies C, Gray R. Aromatase inhibitors versus tamoxifen in early breast cancer: patient-level meta-analysis of the randomised trials. *Lancet* 2015; 386:1341-52.

9. Ebinger S M, Warschkow R, Tarantino I, Schmied B M, Gueller U, Schiesser M. Modest overall survival improvements from 1998 to 2009 in metastatic gastric cancer patients: a population-based SEER analysis. *Gastric Cancer* 2015;.
10. Fearon K, Argiles J M, Baracos V E, Bernabei R, Coats A, Crawford J, Deutz N E, Doehner W, Evans W J, Ferrucci L, Garcia J M, Gralla R J, Jatoi A, Kalantar-Zadeh K, Lainscak M, Morley J E, Muscaritoli M, Polkey M I, Rosano G, Rossi-Fanelli F, Schols A M, Strasser F, Vellas B, von Haehling S, Anker S D. Request for regulatory guidance for cancer cachexia intervention trials. *J Cachexia Sarcopenia Muscle* 2015; 6:272-4.
11. Feilchenfeldt J, Varga Z, Siano M, Grabsch H I, Held U, Schuknecht B, Trip A, Hamaguchi T, Gut P, Balague O, Khanfir K, Diebold J, Jochum W, Shoji H, Kushima R, Wagner D, Shimada Y, Cats A, Knuth A, Moch H, Aebi S, Hofer S. Brain metastases in gastro-oesophageal adenocarcinoma: insights into the role of the human epidermal growth factor receptor 2 (HER2). *Br J Cancer* 2015; 113:716-21.
12. Feller A, Fehr M, Bordoni A, Bouchardy C, Frick H, Mousavi M, Steiner A, Arndt V, Clough-Gorr K M, The Nicer Working Group . Trends in incidence of oesophageal and gastric cancer according to morphology and anatomical location, in Switzerland 1982-2011. *Swiss Med Wkly* 2015; 145:w14245.
13. Fischer S, Gillessen Sommer S, Rothermundt C. Sequence of treatment in locally advanced and metastatic renal cell carcinoma. *Transl Androl Urol* 2015; 4:310-25.
14. Gautschi O, Mach N, Rothschild S I, Li Q, Stahel R A, Zippelius A, Cathomas R, Früh M, Betticher D C, Peters S, Rauch D, Feilchenfeldt J, Bubendorf L, Savic S, Jaggi R, Leibundgut E O, Largiadèr C, Brutsche M, Pilop C, Stalder L, Pless M, Ochsenein A F, Swiss Group for Clinical Cancer Research . Bevacizumab, Pemetrexed, and Cisplatin, or Bevacizumab and Erlotinib for Patients With Advanced Non-Small-Cell Lung Cancer Stratified by Epidermal Growth Factor Receptor Mutation: Phase II Trial SAKK19/09. *Clin Lung Cancer* 2015; 16:358-65.
15. Gillessen Sommer S, De Santis M, Rothermundt C. On Nonharming: The Debate Continues in Stage I Testicular Cancer. *J Clin Oncol* 2015;.
16. Gillessen Sommer S, Fanti S, Omlin A, panelists and authors of APCCC . Reply to the letter to the editor 'Management of patients with advanced prostate cancer: recommendations of the St Gallen Advanced Prostate Cancer Consensus Conference (APCCC) 2015' by Gillessen et al. *Ann Oncol* 2015; 26:2354-5.
17. Gillessen Sommer S, Omlin A, Attard G, de Bono J S, Efstathiou E, Fizazi K, Halabi S, Nelson P S, Sartor O, Smith M R, Soule H R, Akaza H, Beer T M, Beltran H, Chinnaiyan A M, Daugaard G, Davis I D, De Santis M, Drake C G, Eeles R A, Fanti S, Gleave M E, Heidenreich A, Hussain M, James N D, Lecouvet F E, Logothetis C J, Mastris K, Nilsson S, Oh W K, Olmos D, Padhani A R, Parker C, Rubin M A, Schalken J A, Scher H I, Sella A, Shore N D, Small E J, Sternberg C N, Suzuki H, Sweeney C J, Tannock I F, Tombal B. Management of patients with advanced prostate cancer: recommendations of the St Gallen Advanced Prostate Cancer Consensus Conference (APCCC) 2015. *Ann Oncol* 2015; 26:1589-604.
18. Gourgou-Bourgade S, Cameron D, Poortmans P, Asselain B, Azria D, Cardoso F, A'Hern R, Bliss J, Bogaerts J, Bonnefoi H, Brain E, Cardoso M J, Chibaudel B, Coleman R, Cufer T, Dal Lago L, Dalenc F, De Azambuja E, Debled M, Delalogue S, Filleron T, Gligorov J,

- Gutowski M, Jacot W, Kirkove C, Macgrogan G, Michiels S, Negreiros I, Offersen B V, Penault Llorca F, Pruneri G, Roche H, Russell N S, Schmitt F, Servent V, Thürlimann B, Untch M, van der Hage J A, van Tienhoven G, Wildiers H, Yarnold J, Bonnetain F, Mathoulin-Pélissier S, Bellera C, Dabakuyo-Yonli T S. Guidelines for time-to-event end point definitions in breast cancer trials: results of the DATECAN initiative (Definition for the Assessment of Time-to-event Endpoints in CANcer trials)[†]. *Ann Oncol* 2015; 26:873-9.
19. Gueller U, Tarantino I, Cerny T, Schmied B M, Warschkow R. Population-based SEER trend analysis of overall and cancer-specific survival in 5138 patients with gastrointestinal stromal tumor. *BMC Cancer* 2015; 15:557.
 20. Gueller U, Tarantino I, Cerny T, Ulrich A, Schmied B M, Warschkow R. Revisiting a dogma: similar survival of patients with small bowel and gastric GIST. A population-based propensity score SEER analysis. *Gastric Cancer* 2015;.
 21. Guo T, Kouvonen P, Koh C C, Gillet L C, Wolski W E, Röst H L, Rosenberger G, Collins B C, Blum L C, Gillessen Sommer S, Joerger M, Jochum W, Aebersold R. Rapid mass spectrometric conversion of tissue biopsy samples into permanent quantitative digital proteome maps. *Nat Med* 2015; 21:407-13.
 22. Hadji P, Coleman R E, Wilson C, Powles T J, Clézardin P, Aapro M, Costa L, Body J J, Markopoulos C, Santini D, Diel I, Di Leo A, Cameron D, Dodwell D, Smith I, Gnant M, Gray R, Harbeck N, Thürlimann B, Untch M, Cortes J, Martin M, Albert U S, Conte P F, Ejlertsen B, Bergh J, Kaufmann M, Holen I. Adjuvant bisphosphonates in early breast cancer: Consensus guidance for clinical practice from a European Panel. *Ann Oncol* 2015;.
 23. Herrmann C, Ess S, Thürlimann B, Probst-Hensch N, Vounatsou P. 40 years of progress in female cancer death risk: a Bayesian spatio-temporal mapping analysis in Switzerland. *BMC Cancer* 2015; 15:666.
 24. Hui D, Bansal S, Strasser F, Morita T, Caraceni A, Davis M, Cherny N, Kaasa S, Currow D, Abernethy A, Nekolaichuk C, Bruera E. Indicators of Integration of Oncology and Palliative Care Programs: An International Consensus. *Ann Oncol* 2015;.
 25. Hui D, Bansal S, Strasser F, Morita T, Caraceni A, Davis M, Cherny N, Kaasa S, Currow D, Abernethy A, Nekolaichuk C, Bruera E. Reply to the letter to the editor 'Integration between oncology and palliative care: does one size fit all?' by Verna et al. *Ann Oncol* 2015;.
 26. Joerger M, Huitema A D R, Boot H, Cats A, Doodeman V D, Smits P H M, Vainchtein L, Rosing H, Meijerman I, Zueger M, Meulendijks D, Cerny T, Beijnen J H, Schellens J H M. Germline TYMS genotype is highly predictive in patients with metastatic gastrointestinal malignancies receiving capecitabine-based chemotherapy. *Cancer Chemother Pharmacol* 2015; 75:763-72.
 27. Joerger M, van Schaik R H N, Becker M L, Hayoz S, Pollak M, Cathomas R, Winterhalder R, Gillessen Sommer S, Rothermundt C. Multidrug and toxin extrusion 1 and human organic cation transporter 1 polymorphisms in patients with castration-resistant prostate cancer receiving metformin (SAKK 08/09). *Prostate Cancer Prostatic Dis* 2015;.
 28. Jürgens V, Ess S, Schwenkglens M, Cerny T, Vounatsou P. Using lung cancer mortality to indirectly approximate smoking patterns in space. *Spat Spatiotemporal Epidemiol*

2015; 14-15:23-31.

29. Koehle O, Abt D, Rothermundt C, Öhlschlegel C, Brugnolaro-Friedrich C, Schmid H P. Soft tissue sarcomas of the kidney. *Rare Tumors* 2015; 7:5635.
30. Kraff S, Nieuweboer A J M, Mathijssen R H J, Baty F, de Graan A J, van Schaik R H N, Jaehde U, Joerger M. Pharmacokinetically based dosing of weekly paclitaxel to reduce drug-related neurotoxicity based on a single sample strategy. *Cancer Chemother Pharmacol* 2015;.
31. Kraus M, Bader J, Geurink P P, Weyburne E S, Mirabella A C, Silzle T, Shabaneh T B, van der Linden W A, de Bruin G, Haile S, van Rooden E, Appenzeller C, Li N, Kisselev A F, Overkleeft H, Driessen C. The novel β 2-selective proteasome inhibitor LU-102 synergizes with bortezomib and carfilzomib to overcome proteasome inhibitor resistance of myeloma cells. *Haematologica* 2015; 100:1350-60.
32. Laugsand E A, Skorpen F, Kaasa S, Sabatowski R, Strasser F, Fayers P, Klepstad P. Genetic and Non-genetic Factors Associated With Constipation in Cancer Patients Receiving Opioids. *Clin Transl Gastroenterol* 2015; 6:e90.
33. Leyland-Jones B, Gray K P, Abramovitz M, Bouzyk M, Young B, Long B, Kammler R, Dell'orto P, Biasi M O, Thürlimann B, Lyng M B, Ditzel H J, Harvey V J, Neven P, Treilleux I, Rasmussen B B, Maibach R, Price K N, Coates A S, Goldhirsch A, Pagani O, Viale G, Rae J M, Regan M M. CYP19A1 polymorphisms and clinical outcomes in postmenopausal women with hormone receptor-positive breast cancer in the BIG 1-98 trial. *Breast Cancer Res Treat* 2015; 151:373-84.
34. Leyland-Jones B, Gray K P, Abramovitz M, Bouzyk M, Young B, Long B, Kammler R, Dell'orto P, Biasi M O, Thürlimann B, Harvey V, Neven P, Arnould L, Maibach R, Price K N, Coates A S, Goldhirsch A, Gelber R D, Pagani O, Viale G, Rae J M, Regan M M, BIG 1-98 Collaborative Group . ESR1 and ESR2 polymorphisms in the BIG 1-98 trial comparing adjuvant letrozole versus tamoxifen or their sequence for early breast cancer. *Breast Cancer Res Treat* 2015; 154:543-55.
35. Litschel R, Siano M, Tasman A J, Cogliatti S B. Nasolacrimal duct obstruction caused by lymphoproliferative infiltration in the course of chronic lymphocytic leukemia. *Allergy Rhinol (Providence)* 2015; 6:191-4.
36. Metzger Filho O, Giobbie-Hurder A, Mallon E, Gusterson B, Viale G, Winer E P, Thürlimann B, Gelber R D, Colleoni M, Ejlertsen B, Debled M, Price K N, Regan M M, Coates A S, Goldhirsch A. Relative Effectiveness of Letrozole Compared With Tamoxifen for Patients With Lobular Carcinoma in the BIG 1-98 Trial. *J Clin Oncol* 2015; 33:2772-9.
37. Munzone E, Giobbie-Hurder A, Gusterson B A, Mallon E, Viale G, Thürlimann B, Ejlertsen B, Macgrogan G, Bibeau F, Lelkaitis G, Price K N, Gelber R D, Coates A S, Goldhirsch A, Colleoni M, International Breast Cancer Study Group and the BIG 1-98 Collaborative Group . Outcomes of special histotypes of breast cancer after adjuvant endocrine therapy with letrozole or tamoxifen in the monotherapy cohort of the BIG 1-98 trial. *Ann Oncol* 2015;.
38. Nipp R D, Currow D C, Cherny N I, Strasser F, Abernethy A P, Zafar S Y. Best supportive care in clinical trials: review of the inconsistency in control arm design. *Br J Cancer* 2015; 113:6-11.

39. Ocaña A, Diez-Gonzalez L, Garcia-Olmo D C, Templeton A, Vera-Badillo F, Gascon-Escribano M J, Serrano-Heras G, Corrales-Sánchez V, Seruga B, Andrés-Pretel F, Pandiella A, Amir E. Circulating DNA and survival in solid tumors. *Cancer Epidemiol Biomarkers Prev* 2015;.
40. Ocaña A, Ethier J L, Diez-Gonzalez L, Corrales-Sánchez V, Srikanthan A, Gascón-Escribano M J, Templeton A, Vera-Badillo F, Seruga B, Niraula S, Pandiella A, Amir E. Influence of companion diagnostics on efficacy and safety of targeted anti-cancer drugs: systematic review and meta-analyses. *Oncotarget* 2015;.
41. Omlin A, Sartor O, Rothermundt C, Cathomas R, De Bono J S, Shen L, Su Z, Gillessen Sommer S. Analysis of Side Effect Profile of Alopecia, Nail Changes, Peripheral Neuropathy, and Dysgeusia in Prostate Cancer Patients Treated With Docetaxel and Cabazitaxel. *Clin Genitourin Cancer* 2015;.
42. Parker C, Gillessen Sommer S, Heidenreich A, Horwich A, ESMO Guidelines Committee . Cancer of the prostate: ESMO Clinical Practice Guidelines for diagnosis, treatment and follow-up. *Ann Oncol* 2015; 26 Suppl 5:v69-77.
43. Peters S, von Moos R, Thürlimann B. [Is prescription of a therapy costing 150,000 CHF reasonable?]. *Rev Med Suisse* 2015; 11:1967-72.
44. Putora P M, Ess S, Panje C, Hundberger T, van Leyen K, Plasswilm L, Früh M. Prognostic significance of histology after resection of brain metastases and whole brain radiotherapy in non-small cell lung cancer (NSCLC). *Clin Exp Metastasis* 2015; 32:143-9.
45. Rothermundt C, Bailey A, Cerbone L, Eisen T, Escudier B, Gillessen Sommer S, Grünwald V, Larkin J, McDermott D, Oldenburg J, Porta C, Rini B, Schmidinger M, Sternberg C, Putora P M. Algorithms in the First-Line Treatment of Metastatic Clear Cell Renal Cell Carcinoma-Analysis Using Diagnostic Nodes. *Oncologist* 2015; 20:1028-35.
46. Rothermundt C, Hader C, Gillessen Sommer S. Successful treatment with an anti-PD-1 antibody for progressing brain metastases in renal cell cancer. *Ann Oncol* 2015;.
47. Schlaeppli M, Templeton A. Möglichkeiten und Grenzen der Komplementärmedizin in der Onkologie. *Onkologische Pharmazie* 2015; 1:46-50.
48. Schmid S, Omlin A, Blum D, Strasser F, Gillessen Sommer S, Rothermundt C. Assessment of Anticancer-Treatment Outcome in Patients with Metastatic Castration-Resistant Prostate Cancer - Going beyond PSA and Imaging, a Systematic Literature Review. *Ann Oncol* 2015;.
49. Senn H J, Thürlimann B, Gnant M. St.Gallen-2015 in Vienna: News from a successful breast cancer conference transposition! *Breast* 2015;.
50. Shao S, Guo T, Koh C C, Gillessen Sommer S, Joerger M, Jochum W, Aebersold R. Minimal sample requirement for highly multiplexed protein quantification in cell lines and tissues by PCT-SWATH mass spectrometry. *Proteomics* 2015; 15:3711-21.
51. Siano M. Schilddrüsenkarzinom – News-ASCO und Integration in den klinischen Alltag. *Leading Opinions Hämatologie & Onkologie* 2015; 4:.
52. Sonpavde G, Pond G R, Templeton A, Fandi A, Tombal B, Rosenthal M, Armstrong A J, Petrylak D P. Association Between RECIST Changes and Survival in Patients with Metastatic Castration-resistant Prostate Cancer Receiving Docetaxel. *Eur Urol* 2015;.

53. Strasser F, Blum D, Von Moos R, Cathomas R, Ribl K, Aebi S, Betticher D, Hayoz S, Klingbiel D, Brauchli P, Haefner M, Mauri S, Kaasa S, Koeberle D, Swiss Group for Clinical Cancer Research (SAKK) . The effect of real-time electronic monitoring of patient-reported symptoms and clinical syndromes in outpatient workflow of medical oncologists: E-MOSAIC, a multicenter cluster-randomized phase III study (SAKK 95/06). *Ann Oncol* 2015;.
54. Templeton A, Ace O, Amir E, Vera-Badillo F, Ocaña A, Pond G R, Tannock I F. Influence of censoring on conclusions of trials for women with metastatic breast cancer. *Eur J Cancer* 2015;.
55. Templeton A, Šeruga B. Primum non nocere. *Ann Oncol* 2015; 26:2197-8.
56. Toi M, Ohno S, Saeki T, Nakamura S, Thürlimann B. For choosing axillary treatment, and adjuvant hormonal treatment. *Breast Cancer* 2015;.
57. Varga Z, Cassoly E, Li Q, Öhlschlegel C, Tapia C, Lehr H A, Klingbiel D, Thürlimann B, Ruhstaller T. Standardization for Ki-67 assessment in moderately differentiated breast cancer. A retrospective analysis of the SAKK 28/12 study. *PLoS ONE* 2015; 10:e0123435.
58. Vera-Badillo F E, Chang M C, Kuruzar G, Ocaña A, Templeton A, Seruga B, Goldstein R, Bedard P L, Tannock I F, Amir E. Association between androgen receptor expression, Ki-67 and the 21-gene recurrence score in non-metastatic, lymph node-negative, estrogen receptor-positive and HER2-negative breast cancer. *J Clin Pathol* 2015;.
59. Warschkow R, Gueller U, Tarantino I, Cerny T, Schmied B M, Thürlimann B, Joerger M. Improved Survival After Primary Tumor Surgery in Metastatic Breast Cancer: A Propensity-adjusted, Population-based SEER Trend Analysis. *Ann Surg* 2015;.
60. Weber T, Strasser F. When is an invasive palliative intervention in an acute internal medical patient worth it? A structured palliative approach. *Wien Med Wochenschr* 2015; 165:467-471.
61. Weixler B, Warschkow R, Zettl A, Riehle H M, Gueller U, Viehl C T, Zuber M. Intranodal Mapping Using Carbon Dye Results in More Accurate Lymph Node Staging in Colon Cancer Patients. *World J Surg* 2015; 39:2583-9.
62. Zaman K, Winterhalder R, Mamot C, Hasler-Strub U, Rochlitz C, Mueller A, Berset C, Wilidors H, Perey L, Rudolf C B, Hawle H, Rondeau S, Neven P. Fulvestrant with or without selumetinib, a MEK 1/2 inhibitor, in breast cancer progressing after aromatase inhibitor therapy: a multicentre randomised placebo-controlled double-blind phase II trial, SAKK 21/08. *Eur J Cancer* 2015; 51:1212-20.
63. Zürcher-Härdi U, Siano M, Broglie Däppen M. Knochenmarksversagen bei Tumorinfiltration bei einem Patienten mit Ästhesioneuroblastom, Mantelzell-Non-Hodgkin-Lymphom und Rektumkarzinom. *Schweiz. Krebs Bulletin* 2015; 1:98-101.
64. Zürcher-Härdi U, Siano M. Antiemese und Tumormedikation. *info@onkologie.ch* 2015; 1:20-26.

Wissenschaftliche Artikel

1. Alexandrova E, Miglino N, Hashim A, Nassa G, Stellato C, Tamm M, Baty F, Brutsche M, Weisz A, Borger P. Small RNA profiling reveals deregulated phosphatase and tensin homolog (PTEN)/phosphoinositide 3-kinase (PI3K)/Akt pathway in bronchial smooth muscle cells from asthmatic patients. *J Allergy Clin Immunol* 2015;.
2. Baty F, Klingbiel D, Zappa F, Brutsche M. High-throughput alternative splicing detection using dually constrained correspondence analysis (DCCA). *J Biomed Inform* 2015;.
3. Baty F. A toolbox for nonlinear regression in R: the package nlstools. *Journal of Statistical Software* 2015; 66:1-21.
4. Baty F. Contrasting seasonal and interannual environmental drivers in bacterial communities within shallow large lake: evidence from a seven year survey. *Aquatic Microbial Ecology* 2015;.
5. Bednarz S, Filipovic M, Schoch O, Mauermann E. Gastric rupture after bag-mask-ventilation. *Respir Med Case Rep* 2015; 16:1-2.
6. Francini A, Baty F, Macovei I I, Durr O, Droege C, Betticher D, Grigoriu B D, Klingbiel D, Zappa F, Brutsche M. Gene expression signatures predictive of bevacizumab/erlotinib therapeutic benefit in advanced non-squamous non-small cell lung cancer patients (SAKK 19/05 trial). *Clin Cancer Res* 2015;.
7. Frasnelli M, Baty F, Niedermann J, Brutsche M, Schoch O. Effect of telemetric monitoring in the first 30 days of continuous positive airway pressure adaptation for obstructive sleep apnoea syndrome - a controlled pilot study. *J Telemed Telecare* 2015;.
8. Garde A, Giraldo B F, Jané R, Latshang T D, Turk A J, Hess T, Bosch M M, Barthelmes D, Merz T M, Hefti J P, Schoch O, Bloch K E. Time-varying signal analysis to detect high-altitude periodic breathing in climbers ascending to extreme altitude. *Med Biol Eng Comput* 2015;.
9. Gautschi O, Mach N, Rothschild S I, Li Q, Stahel R A, Zippelius A, Cathomas R, Früh M, Betticher D C, Peters S, Rauch D, Feilchenfeldt J, Bubendorf L, Savic S, Jaggi R, Leibundgut E O, Largiadèr C, Brutsche M, Pilop C, Stalder L, Pless M, Ochsenein A F, Swiss Group for Clinical Cancer Research . Bevacizumab, Pemetrexed, and Cisplatin, or Bevacizumab and Erlotinib for Patients With Advanced Non-Small-Cell Lung Cancer Stratified by Epidermal Growth Factor Receptor Mutation: Phase II Trial SAKK19/09. *Clin Lung Cancer* 2015; 16:358-65.
10. Hansen J, Rassouli F, Brutsche M. [Cardiopulmonary exercise testing (CPET) – indication and clinical impact]. *Ther Umsch* 2015; 72:321-6.
11. Horvath C, Schneider T, Kluckert J T, Brutsche M. ARDS nach akzidenteller Aspiration von Petroleum beim Erwachsenen. *Pneumologie* 2015; 69:1-4.

12. Kraff S, Nieuweboer A J M, Mathijssen R H J, Baty F, de Graan A J, van Schaik R H N, Jaehde U, Joerger M. Pharmacokinetically based dosing of weekly paclitaxel to reduce drug-related neurotoxicity based on a single sample strategy. *Cancer Chemother Pharmacol* 2015;.
13. Mueller-Mottet S, Stricker H, Domenighetti G, Azzola A, Geiser T, Schwerzmann M, Weilenmann D, Schoch O, Fellrath J M, Rochat T, Lador F, Beghetti M, Nicod L, Aubert J D, Popov V, Speich R, Keusch S, Hasler E, Huber L C, Grendelmeier P, Tamm M, Ulrich S. Long-term data from the swiss pulmonary hypertension registry. *Respiration* 2015; 89:127-40.
14. Nussbaumer-Ochsner Y, Rassouli F, Uhlmann F, Thurnheer R. Endobronchial lipoma mimicking bronchial carcinoid tumour. *Thorax* 2015; 70:809.
15. Ritz C, Baty F, Streibig J C, Gerhard D. Dose-Response Analysis Using R. *PLoS ONE* 2015; 10:e0146021.
16. Sievi N A, Senn O, Brack T, Brutsche M, Frey M, Irani S, Leuppi J D, Thurnheer R, Franzen D, Kohler M, Clarenbach C F. Impact of comorbidities on physical activity in COPD. *Respirology* 2015; 20:413-8.
17. Spahr Y, Brutsche M, Valmaggia C. [The role of chronic or transient hypoxia on the retinal nerve fiber layers]. *Klin Monbl Augenheilkd* 2015; 232:395-8.

Rheumatologie

1. Müller R, von Kempis J, Haile S, Schiff M H. Effectiveness, tolerability, and safety of subcutaneous methotrexate in early rheumatoid arthritis: A retrospective analysis of real-world data from the St. Gallen cohort. *Semin Arthritis Rheum* 2015; 45:28-34.

Anästhesiologie/Intensivmedizin

Wissenschaftliche Artikel

1. Bednarz S, Filipovic M, Schoch O, Mauermann E. Gastric rupture after bag-mask-ventilation. *Respir Med Case Rep* 2015; 16:1-2.
2. Bolliger D, Filipovic M, Matt P, Tanaka K A, Gregor M, Zenklusen U, Seeberger M D, Lurati Buse G. Reduced aspirin responsiveness as assessed by impedance aggregometry is not associated with adverse outcome after cardiac surgery in a small low-risk cohort. *Platelets* 2015;1-8.
3. Jacomet A, Tasman A J. Airway Management in Facial Trauma Patients. *Facial Plast Surg* 2015; 31:319-24.
4. Pietsch U. Evaluation of multidisciplinary simulation-based team training: the way forward for training ICU teams. *Intensive Care Medicine Experimental* 2015; 3:425-507.
5. Pietsch U. Herz-Kreislauf-Stillstand im sommerlichen Hochgebirge : Unterschiedliche Ursachen mit unterschiedlichem Outcome Cardiac Arrest in High Mountain Regions During the Summer Season Different Causes with Different Outcomes. *Der Notarzt* 2015; 4:184-194.

Klinik für Allgemein-, Viszeral- und Transplantationschirurgie

Wissenschaftliche Artikel

1. Adamina M, Steffen T, Tarantino I, Beutner U, Schmied B M, Warschkow R. Meta-analysis of the predictive value of C-reactive protein for infectious complications in abdominal surgery. *Br J Surg* 2015; 102:590-8.
2. Aigner F, Hörmann R, Fritsch H, Pratschke J, D'Hoore A, Brenner E, Williams N, Biebl M, The TAMIS TME collaboration group , Weiss H, Herbst F, Panis Y, Brunner W, Morales-Conde S, Zorron R, Sileri P, Boni L, de Graaf E J, Scherer R, Shamiyeh A, Klaus A, Tse C, Mittermair R. Anatomical considerations for transanal minimal-invasive surgery: the caudal to cephalic approach. *Colorectal Dis* 2015; 17:O47-O53.
3. Beutner U, Leowardi C, Bork U, Lüthi C, Tarantino I, Pahernik S, Wente M N, Büchler M W, Schmied B M, Müller S A. Survival after renal cell carcinoma metastasis to the thyroid: single center experience and systematic review of the literature. *Thyroid* 2015; 25:314-24.
4. Brunner W, Rossetti A, Vines L C, Kalak N, Bischofberger S. Anastomotic leakage after

- laparoscopic single-port sigmoid resection: combined transanal and transabdominal minimal invasive management. *Surg Endosc* 2015; 29:3803-5.
5. Ebinger S M, Warschkow R, Tarantino I, Schmied B M, Gueller U, Schiesser M. Modest overall survival improvements from 1998 to 2009 in metastatic gastric cancer patients: a population-based SEER analysis. *Gastric Cancer* 2015;.
 6. Ebinger S M, Warschkow R, Tarantino I, Schmied B M, Marti L. Anastomotic leakage after curative rectal cancer resection has no impact on long-term survival: a propensity score analysis. *Int J Colorectal Dis* 2015;.
 7. Engeler D, Meyer D, Abt D, Müller S A, Schmid H P. Sacral neuromodulation for the treatment of neurogenic lower urinary tract dysfunction caused by multiple sclerosis: a single-centre prospective series. *BMC Urology* 2015; 15:105.
 8. Gueller U, Tarantino I, Cerny T, Schmied B M, Warschkow R. Population-based SEER trend analysis of overall and cancer-specific survival in 5138 patients with gastrointestinal stromal tumor. *BMC Cancer* 2015; 15:557.
 9. Gueller U, Tarantino I, Cerny T, Ulrich A, Schmied B M, Warschkow R. Revisiting a dogma: similar survival of patients with small bowel and gastric GIST. A population-based propensity score SEER analysis. *Gastric Cancer* 2015;.
 10. Hüttner F J, Schneider L, Tarantino I, Warschkow R, Schmied B M, Hackert T, Diener M K, Büchler M W, Ulrich A. Palliative resection of the primary tumor in 442 metastasized neuroendocrine tumors of the pancreas: a population-based, propensity score-matched survival analysis. *Langenbecks Arch Surg* 2015;.
 11. Janczak J M, Beutner U, Hasler K. Body packing: from seizures to laparotomy. *Case Rep Emerg Med* 2015; 2015:208047.
 12. Marti L. Risiko für Wiedereinweisung und Notoperation nach nichtoperativer Behandlung der Kolondivertikulitis. *coloproctology* 2015; 37:408-409.
 13. Müller-Stich B P, Achtstätter V, Diener M K, Gondan M, Warschkow R, Marra F, Zerz A, Gutt C N, Büchler M W, Linke G R. Repair of Paraesophageal Hiatal Hernias—Is a Fundoplication Needed? A Randomized Controlled Pilot Trial. *J Am Coll Surg* 2015; 221:602-10.
 14. Müller-Stich B P, Linke G R, Senft J, Achtstätter V, Müller P C, Diener M K, Warschkow R, Marra F, Schmied B M, Borovicka J, Fischer L, Zerz A, Gutt C N, Büchler M W. Laparoscopic Mesh-augmented HiatoPlasty With Cardiophrenicopexy Versus Laparoscopic Nissen Fundoplication for the Treatment of Gastroesophageal Reflux Disease: A Double-center Randomized Controlled Trial. *Ann Surg* 2015; 262:721-7.
 15. Müller-Stich B P, Senft J D, Warschkow R, Kenngott H G, Billeter A T, Vit G, Helfert S, Diener M K, Fischer L, Büchler M W, Nawroth P P. Surgical versus medical treatment of type 2 diabetes mellitus in nonseverely obese patients: a systematic review and meta-analysis. *Ann Surg* 2015; 261:421-429.
 16. Niederer-Wüst S M, Jochum W, Förbs D, Brändle M, Bilz S, Clerici T, Oettli R, Müller J, Haile S, Ess S, Stöckli S, Broglie Däppen M. Impact of clinical risk scores and BRAF V600E mutation status on outcome in papillary thyroid cancer. *Surgery* 2015; 157:119-

125.

17. Øresland T, Bemelman W A, Sampietro G M, Spinelli A, Windsor A, Ferrante M, Marteau P, Zmora O, Kotze P G, Espin-Basany E, Turet E, Sica G, Panis Y, Faerden A E, Biancone L, Angriman I, Serclova Z, de Buck van Overstraeten A, Gionchetti P, Stassen L, Warusavitarne J, Adamina M, Dignass A, Eliakim R, Magro F, D'Hoore A, European Crohn's and Colitis Organisation (ECCO) . European evidence based consensus on surgery for ulcerative colitis. *J Crohns Colitis* 2015; 9:4-25.
18. Righini-Grunder F, Hurni M, Warschkow R, Rischewski J. Frequency of Oral Mucositis and Local Virus Reactivation in Herpes Simplex Virus Seropositive Children with Myelosuppressive Therapy. *Klin Padiatr* 2015; 227:335-338.
19. Sawatzki M, Brunner W, Neff-Schöb A, Meyenberger C, Borovicka J. Chronische Nausea und Emesis. *Swiss Medical Forum* 2015; 15:1039-1040.
20. Senft J D, Carstensen B, Mischnik A, Warschkow R, Müller-Stich B P, Linke G R. Endolumenal colon occlusion reduces peritoneal contamination during a transrectal NOTES procedure: a controlled porcine survival study. *Surg Endosc* 2015;.
21. Steffen T, Ebinger S M, Warschkow R, Lüthi C, Schmied B M, Clerici T. Long-Term Survival is not Impaired After the Complete Resection of Neuroendocrine Tumors of the Appendix. *World J Surg* 2015; 39:2670-6-2670.
22. Tarantino I, Hüttner F J, Warschkow R, Schmied B M, Diener M K, Ulrich A. Prognostic Relevance of Mucinous Subtype in a Population-based Propensity Score Analysis of 40,083 Rectal Cancer Patients. *Ann Surg Oncol* 2015;.
23. Tarantino I, Warschkow R, Beutner U, Kolb W, Lüthi A, Lüthi C, Schmied B M, Clerici T. Efficacy of a Single Preoperative Dexamethasone Dose to Prevent Nausea and Vomiting After Thyroidectomy (the tPONV Study): A Randomized, Double-blind, Placebo-controlled Clinical Trial. *Ann Surg* 2015; 262:934-940.
24. Trujillo M R, Muller D, Widmer J D, Warschkow R, Muller M K. Long-Term Follow-Up of Gastric Banding 10 Years and Beyond. *Obes Surg* 2015;.
25. Weixler B, Warschkow R, Zettl A, Riehle H M, Gueller U, Viehl C T, Zuber M. Intranodal Mapping Using Carbon Dye Results in More Accurate Lymph Node Staging in Colon Cancer Patients. *World J Surg* 2015; 39:2583-9.
26. Wilhelm A, Müller S A, Steffen T, Schmied B M, Beutner U, Warschkow R. Patients with Adenocarcinoma of the Small Intestine with 9 or More Regional Lymph Nodes Retrieved Have a Higher Rate of Positive Lymph Nodes and Improved Survival. *J Gastrointest Surg* 2015;.
27. Wilms B, Ernst B, Gerig R, Schultes B. Plasma Omentin-1 Levels are Related to Exercise Performance in Obese Women and Increase Upon Aerobic Endurance Training. *Exp Clin Endocrinol Diabetes* 2015; 123:187-92.
28. Wilms B, Ernst B, Thurnheer M, Schultes B. Subjective and objective physical activity patterns after Roux-en Y gastric bypass surgery compared with non-operated obese and non-obese control women. *Obes Res Clin Pract* 2015;.

Klinik für Gefässchirurgie

Wissenschaftliche Artikel

1. Dick F, Tevaearai H. Significance and Limitations of the p Value. *Eur J Vasc Endovasc Surg* 2015; 50:815.
2. Erbel R, Aboyans V, Boileau C, Bossone E, Di Bartolomeo R, Eggebrecht H, Evangelista A, Falk V, Frank H, Gaemperli O, Grabenwoger M, Haverich A, Jung B, John Manolis A, Meijboom F, Nienaber C A, Roffi M, Rousseau H, Sechtem U, Sirnes P A, von Allmen R, Vrints C, Authors/Task Force members. Corrigendum to: 2014 ESC Guidelines on the diagnosis and treatment of aortic diseases. *Eur Heart J* 2015; 36:2779.
3. Huber C, Praz F, O'Sullivan C J, Langhammer B, Gloekler S, Stortecky S, von Allmen R, Meier B, Carrel T, Englberger L, Windecker S, Wenaweser P. Transcatheter aortic valve-in-valve implantation for degenerated stentless aortic root conduits with severe regurgitation: a case series. *Interact Cardiovasc Thorac Surg* 2015; 20:694-700.
4. von Allmen R, Anjum A, Powell J T, Earnshaw J J. Hospital trends of admissions and procedures for acute leg ischaemia in England, 2000-2011. *Ann R Coll Surg Engl* 2015; 97:59-62.
5. von Allmen R, Nguyen D P, Birkhäuser F D, Bednar R, Kammer R, Do D D, Diehm N. Lesion Pattern in Patients With Erectile Dysfunction of Suspected Arterial Origin: An Angiographic Study. *J Endovasc Ther* 2015; 23:76-82.
6. von Allmen R, Weiss S, Tevaearai H T, Kuemmerli C, Tinner C, Carrel T P, Schmidli J, Dick F. Completeness of Follow-Up Determines Validity of Study Findings: Results of a Prospective Repeated Measures Cohort Study. *PLoS ONE* 2015; 10:e0140817.

Frauenklinik

Buchkapitel

1. Thanner M: Effizienz, Verteilungsgerechtigkeit und Altruismus – Über Limitationen gesundheitsökonomischer Modelle und deren Missbrauchsmöglichkeiten. In: *Gesundheitsverantwortung zwischen Markt und Staat. Interdisziplinäre Zugänge*. Baden-Baden: Nomos, 2015, S. 421-432
2. Thanner M: Möglichkeiten und Grenzen der ökonomischen Gestaltung des Gesundheitswesens. In: *Gesundheitsverantwortung zwischen Markt und Staat. Interdisziplinäre Zugänge*. Baden-Baden : Nomos, 2015, S. 163-173

Wissenschaftliche Artikel

1. Hornung R, Hülder T, Markus A. Ist die Lymphonodektomie beim Korpuskarzinom noch zeitgemäss? *Leading Opinions (Medizin für die Frau)* 2015; 8:22-24.
2. Jäckel K, Braschler T, Jochum W, Hülder T, Knechtle B. [How is agonizing leg pain associated with an intrauterine device?]. *Praxis (Bern 1994)* 2015; 104:517-22.
3. Jäckel K, Braschler T, Jochum W, Hülder T, Knechtle B. In welchem Zusammenhang stehen quälende Beinschmerzen und eine intrauterine Spirale? *Praxis (Schweizerische Rundschau für Medizin)* 2015; 104:517-522.
4. Kobayashi J, Thanner M, Nagels K. Importförderung von Arzneimitteln: Eine Untersuchung zu Auswirkungen auf diverse Akteure im Gesundheitswesen. *Monitor Versorgungsforschung* 2015; 8:56-58.
5. Saxer H, Fischer T, Ineichen M, Schmid S, Häberlin F. Der heimtückische Oberbauchschmerz. *Swiss Medical Forum* 2015; 15:534-535.
6. Thanner M, Drack G, Hornung R. Expense for Clinical Documentation of Inpatients: Extent and Hierarchal Differences for the Example of a Gynaecological Department in Switzerland. *Geburtsh Frauenheilk* 2015; 75:1264-1269.
7. Thanner M, Loss J, Nagel E. Religiosität und Spiritualität im beruflichen Idealbild niedergelassener Ärzte. Zur Auswirkung auf die Arbeitsteilung in der Versorgung. *Spiritual Care* 2015; 4:8-18.

Klinik für Orthopädische Chirurgie

Buchkapitel

1. Benninger E ; Jost B: 48C. Glenohumeral Dislocation. Proximal Humerus Fractures and Glenohumeral Dislocations. In: *Skeletal Trauma 5th Edition*. Philadelphia, PA 19103-2899 : Elsevier Saunders, 2015, S. 1454-1482
2. Benninger E; Jost B: 48D. Treatment of Fracutre Sequelae of the Proximal Humerus. In: *Skeletal Trauma 5th Edition*. Philadelphia, PA 19103-2899 : Elsevier Saunders, 2015, S. 1483-1498
3. Spross ; Jost B: 48B. Proximal Humeral Fractures and Fracture-Dislocations. In: *Skeletal Trauma 5th Edition*. Philadelphia, PA 19103-2899 : Elsevier Saunders, 2015, S. 1423-1453
4. Zdravkovic V; Jost B: 48A. Essential Principles. Proximal Humerus Fractures and Glenohumeral Dislocations. In: *Skeletal Trauma 5th Edition*. Philadelphia, PA 19103-2899 : Elsevier Saunders, 2015, S. 1407-1422

Wissenschaftliche Artikel

1. Cernoch P, Hechelhammer L, von Hessling A, Spross C, Erhardt J, Jost B, Külling F A. Pre-operative embolisation of spinal metastasis: technique, complication rate and outcome-clinical experience. *Int Orthop* 2015; 39:1399-404.
2. Dietrich T J, Jonczy M, Buck F M, Sutter R, Puskas G, Pfirrmann C W. Ultrasound of the coracoacromial ligament in asymptomatic volunteers and patients with shoulder impingement. *Acta Radiol* 2015;.
3. Erschbamer M, den Hollander J, Sauter D, Erhardt J, Hechelhammer L, Külling F A. Endovascular embolisation is a successful and safe treatment for post-operative arterial complications after total hip arthroplasty and revision surgery. *International Orthopaedics* 2015;1-6.
4. Ewers A, Spross C, Ebnetter L, Külling F A, Giesinger K, Zdravkovic V, Erhardt J. 10-Year Survival of Acetabular Reinforcement Rings/Cages for Complex Hip Arthroplasty. *Open Orthop J* 2015; 9:163-7.
5. Frings J, Twerenbold R. Arthroskopisch assistierte Osteosynthese einer Epiphysenverletzung des Tibiaplateaus mit transossärer Refixation einer ossären VKB-Avulsion. *Arthroskopie* 2015;1-5.
6. Giesinger J M, Hamilton D F, Jost B, Behrend H, Giesinger K. WOMAC, EQ-5D and Knee Society Score Thresholds for Treatment Success After Total Knee Arthroplasty. *J Arthroplasty* 2015;.
7. Giesinger J M, Kesterke N, Hamilton D F, Holzner B, Jost B, Giesinger K. Development of an item list to assess the forgotten joint concept in shoulder patients. *BMC Musculoskelet Disord* 2015; 16:67.
8. Giesinger K, Hamilton D F, Erschbamer M, Jost B, Giesinger J M. Black medicine: an observational study of doctors' coffee purchasing patterns at work. *BMJ* 2015; 351:h6446.
9. Gikas P, Keller S, Boyle R, Stalley P. Principles of the surgical management of bone tumours. *Prthopaedics and Trauma* 2015; 29:160-162.
10. Grob K, Manestar M, Ackland T, Filgueira L, Kuster M S. Potential Risk to the Superior Gluteal Nerve During the Anterior Approach to the Hip Joint: An Anatomical Study. *J Bone Joint Surg Am* 2015; 97:1426-31.
11. Grob K, Manestar M, Lang A, Ackland T, Gilbey H, Kuster M S. Effects of ligation of lateral intermuscular septum perforating vessels on blood supply to the femur. *Injury* 2015;.
12. Grob K, Monahan R, Gilbey H, Ackland T, Kuster M S. Limitations of the Vastus Lateralis Muscle as a Substitute for Lost Abductor Muscle Function: An Anatomical Study. *J Arthroplasty* 2015;.
13. Grob K, Monahan R, Gilbey H, Yap F, Filgueira L, Kuster M. Distal extension of the direct anterior approach to the hip poses risk to neurovascular structures: an anatomical study. *J Bone Joint Surg Am* 2015; 97:126-32.
14. Jost B, Benninger E, Erhardt J, Külling F A, Zdravkovic V, Spross C. The extended medial elbow approach-a cadaveric study. *J Shoulder Elbow Surg* 2015; 24:1074-80.

15. Jost B. CORR Insights(®): No Differences in Early Results of a Hybrid Glenoid Compared With a Pegged Implant. *Clin Orthop Relat Res* 2015;.
16. Kesterke N, Egeter J, Erhardt J, Jost B, Giesinger K. Patient-reported outcome assessment after total joint replacement: comparison of questionnaire completion times on paper and tablet computer. *Archives of Orthopaedic and Trauma Surgery* 2015; 135:935-941.
17. Külling F A. Can triggered electromyography monitoring throughout retraction predict postoperative symptomatic neuropraxia after XLIF? Results from a prospective multicenter trial. *European Spine Journal* 2015; 24:S378-385.
18. Ladurner A, Forster T, Külling F A. Wirbelkörperfrakturen im Rahmen eines generalisierten epileptischen Anfalls. *Unfallchirurg* 2015; Jul 2015:.
19. Langen S, Gaber S, Zdravkovic V, Giesinger K, Jost B, Behrend H. Lateral subvastus approach with tibial tubercle osteotomy for primary total knee arthroplasty: clinical outcome and complications compared to medial parapatellar approach. *Eur J Orthop Surg Traumatol* 2015;.
20. Matsumoto M, Baba T, Homma Y, Kobayashi H, Ochi H, Yuasa T, Behrend H, Kaneko K. Validation study of the Forgotten Joint Score-12 as a universal patient-reported outcome measure. *Eur J Orthop Surg Traumatol* 2015;.
21. Puskas G, Germann M, Catanzaro S, Gerber C. Secondary latissimus dorsi transfer after failed reverse total shoulder arthroplasty. *J Shoulder Elbow Surg* 2015; 24:e337-44.
22. Puskas G, Meyer D C, Lebschi J A, Gerber C. Unacceptable failure of hemiarthroplasty combined with biological glenoid resurfacing in the treatment of glenohumeral arthritis in the young. *J Shoulder Elbow Surg* 2015; 24:1900-7.
23. Schaefer T K, Spross C, Stoffel K K, Yates P J. Biomechanical properties of a posterior fully threaded positioning screw for cannulated screw fixation of displaced neck of femur fractures. *Injury* 2015;.
24. Spross C, Gruenienger P, Gohil S, Dietrich M. Open Reduction and Internal Fixation of Fractures of the Proximal Part of the Humerus. *JBJS Essent Surg Tech* 2015; 5:15-16.
25. Spross C, Kaestle N, Benninger E, Fornaro J, Erhardt J, Zdravkovic V, Jost B. Deltoid Tuberosity Index: A Simple Radiographic Tool to Assess Local Bone Quality in Proximal Humerus Fractures. *Clin Orthop Relat Res* 2015; 473:3038-45.

Klinik für Urologie

Wissenschaftliche Artikel

1. Abt D, Mordasini L, Hechelhammer L, Kessler T, Schmid H P, Engeler D. Prospektive, randomisierte Studie. PAE versus TUR-P in der Behandlung der BPH. *Urologik* 2015; 22:10-3.
2. Abt D, Mordasini L, Warzinek E, Schmid H P, Haile S R, Engeler D, Muellhaupt G. Is intravesical stent position a predictor of associated morbidity? *Korean J Urol* 2015;

56:370-8.

3. Abt D, Warzinek E, Schmid H P, Haile S R, Engeler D. Influence of patient education on morbidity caused by ureteral stents. *Int J Urol* 2015; 22:679-83.
4. Betschart P, Staubli S, Schmid H P. Neue Methoden der Bildgebung beim Prostatakarzinom. *Leading Opinions Hämatol Onkol* 2015; 11:66-8.
5. Cheng S, Schmid H P. Obstruktive Miktionsbeschwerden bei Männern - State of the art. *Hausarzt Praxis* 2015; 10:26-30.
6. Engeler D, Meyer D, Abt D, Müller S, Schmid H P. Sacral neuromodulation for the treatment of neurogenic lower urinary tract dysfunction caused by multiple sclerosis: a single-centre prospective series. *BMC Urol* 2015; 15:105.
7. Engeler D, Putora P M, Schmid H P, Aebersold D. Permanente interstitielle Brachytherapie mit Jod-125. *info@onkologie* 2015; 5:13-5.
8. Engeler D, Schwab C, Thöni A F, Hochreiter W, Prikler L, Suter S, Stucki P, Schiefer J, Plasswilm L, Schmid H P, Putora P M. PSA bounce after (125)I-brachytherapy for prostate cancer as a favorable prognosticator. *Strahlenther Onkol* 2015; 191:787-791.
9. Hechelhammer L, Abt D, Mordasini L, Muellhaupt G, Schmid H P, Engeler D. To bead or not to bead - Embolisation der Prostataarterien zur Behandlung der BPH. *Schweiz Med Forum* 2015; 15:1188-90.
10. Iselin C, Recker F, Thalmann G, Lehmann K, Sulser T, Spörri P, Jichlinski P, Tenti G, Bräutigam R, Mattei A, Sautter T, Schmid H P. Urologische Behandlung bei lokalisierendem Prostatakarzinom. Die Bedeutung der aktiven Ueberwachung in der Schweiz. *Schweiz Med Forum* 2015; 15:742-4.
11. James N D, Spears M R, Clarke N W, Dearnaley D P, Mason M D, Parker C C, Ritchie A W S, Russell J M, Schiavone F, Attard G, de Bono J S, Birtle A, Engeler D, Elliott T, Matheson D, O'Sullivan J, Pudney D, Srihari N, Wallace J, Barber J, Syndikus I, Parmar M K B, Sydes M R, STAMPEDE Investigators . Failure-Free Survival and Radiotherapy in Patients With Newly Diagnosed Nonmetastatic Prostate Cancer: Data From Patients in the Control Arm of the STAMPEDE Trial. *JAMA Oncol* 2015;1-10.
12. Koehle O, Abt D, Rothermundt C, Öhlschlegel C, Brugnolaro-Friedrich C, Schmid H P. Soft tissue sarcomas of the kidney. *Rare Tumors* 2015; 7:5635.
13. Koehle O, Schmid H P, Schwab C. Wie lautet Ihre Diagnose? *Schweiz Rundschau Med (PRAXIS)* 2015; 104:129-30.
14. Maletzki P, Diener P A, Bjasch D, Schmid H P. Primärer neuroendokriner Tumor der Niere. Eine Rarität. *Urologe* 2015; 54:844-8.
15. Maletzki P, Markart P, Engeler D, Schiefer J, Plasswilm L, Schmid H P, Schwab C. Späte Seed-Migration nach LDR-Brachytherapie der Prostata mit J-125 Permanentimplantaten. *J Urol Urogynäkol* 2015; 22:4-9.
16. Mordasini L, Abt D, Engeler D, Hechelhammer L, Schmid H P. Prostatic artery embolization vs. conventional TUR-P in the treatment of benign prostatic hyperplasia - Hintergründe, Vorstellung und erste Erfahrungsberichte einer prospektiven, randomisierten Studie. *German Medical Science, www.egms.de* 2015;.
17. Mordasini L, Abt D, Engeler D, Muellhaupt G, Schwab C, Schmid H P. Thulium Laser

Vaporisation der Prostata: Erste Ergebnisse einer prospektiven Studie zur Bestimmung der Flüssigkeitseinschwemmung durch die Messung der endexpiratorischen Ethanolkonzentration in der Atemluft. German Medical Science, www.egms.de 2015;.

18. Mordasini L, Abt D, Muellhaupt G, Engeler D, Lüthi A, Schmid H P, Schwab C. Is absorption of irrigation fluid a problem in Thulium laser vaporization of the prostate? A prospective investigation using the expired breath ethanol test. *BMC Urol* 2015; 15:35.
19. Muellhaupt G, Engeler D, Schmid H P, Abt D. How do stone attenuation and skin-to-stone distance in computed tomography influence the performance of shock wave lithotripsy in ureteral stone disease? *BMC Urol* 2015; 15:72.
20. Muellhaupt G, Schmid H P, Schwab C. Symptome, Abklärung und Therapie. Benignes Prostatasyndrom. 2015;.
21. Plasswilm L, Schmid H P, Schwab C, Putora P M. (Neo-) Adjuvante endokrine Therapie des lokoregionär begrenzten Prostatakarzinoms. *J Urol Urogynäkol* 2015; 22:10-5.
22. Putora P M, Engeler D, Haile S R, Graf N, Buchauer K, Schmid H P, Plasswilm L. Erectile function following brachytherapy, external beam radiotherapy, or radical prostatectomy in prostate cancer patients. *Strahlenther Onkol* 2015;.
23. Schmid H P, Abt D, Mordasini L. Frühes Prostatakarzinom. Behandlung bei Senioren und Hochbetagten. *Ars Medici* 2015; 105:700-2.
24. Schmid H P, Abt D, Mordasini L. Therapiemodalitäten beim fortgeschrittenen Prostatakarzinom in der Praxis. *Spectrum Urol* 2015; 6:4-5.
25. Schmid H P, Bandhauer K. Das Alpenländische Urologensymposium im Spannungsfeld zwischen Tradition und Innovation. *Urologe* 2015; 54 (suppl 1):101.
26. Schmid H P, Bandhauer K. Das Alpenländische Urologensymposium: die Tradition setzt sich fort. German Medical Science, www.egms.de 2015;.
27. Schmid H P, Mordasini L, Abt D. Adjuvante Hormontherapie des Prostatakarzinoms. *info@onkologie* 2015; 5:10-1.
28. Schmid H P, Mordasini L, Abt D. Lokalisiertes Prostatakarzinom. Therapie beim älteren Patienten. *Der Allgemeinarzt* 2015; 37:26-8.
29. Schmid H P, Plasswilm L, Schiefer J. Strahlenquellen im Körper bekämpfen den Prostatakrebs. *DUO* 2015;14-7.
30. Schmid H P, Schiefer J, Plasswilm L. Strahlenquellen im Körper bekämpfen den Prostatakrebs. *Ostschweiz am Sonntag* 2015; 35:19.
31. Schmid H P. Fortschritte in der Urologie ?- Fortschritte!. *Der informierte @rzt* 2015; 5:12.
32. Schmid H P. Trends beim Nierenzellkarzinoms. Abklärungsgang und lokalisierte Therapie. *info@onkologie* 2015; 5:27-30.
33. Schwab C, Schmid H P. EBU recertifies St. Gallen Hospital's Urology Department. A commitment to high quality standards. *Eur Urol Today* 2015; 27:27.
34. Staubli S, Gramann T, Schwab C, Semela D, Hechelhammer L, Engeler D, Schmid H P, Abt D, Mordasini L. Life-threatening bleeding from peristomal varices after cystoprostatectomy: multimodal approach in a cirrhotic, encephalopathic patient with

severe portal hypertension. Case Rep Urol 2015; 2015:785010.

35. Staubli S. Phosphodiesterase 5 inhibitors for the treatment of erectile dysfunction: a trade-off network meta-analysis. European Urology 2015;.
36. Wolff J, Schmid H P. Testosteron im Management des metastasierten Prostatakarzinoms. Urologe 2015; 54:1578-83.

Augenklinik

Wissenschaftlicher Artikel/Review

1. Spahr Y, Brutsche M, Valmaggia C. [The role of chronic or transient hypoxia on the retinal nerve fiber layers]. *Klin Monbl Augenheilkd* 2015; 232:395-8.

Hals-Nasen-Ohrenklinik

Buchkapitel

1. Rosenfeld J: Alles klar im Ohr? - Frühe Hörstörungen. In: Stricker I (Hrsg.): *Ganz Ohr! Musik für Kinder*. Hannover: Insitut für musikpädagogische Forschung, 2015.- ISBN 978-3-931852-87-0, S. 56-60

Wissenschaftliche Artikel

1. Broglie Däppen M, Jochum W, Förbs D, Schöneegg R, Stöckli S. Brush cytology for the detection of high-risk HPV infection in oropharyngeal squamous cell carcinoma. *Cancer Cytopathol* 2015; 123:732-8.
2. Engel D C, Ferrari A, Tasman A J, Schmid R, Schindel R, Haile S R, Mariani L, Fournier J Y. A basic model for training of microscopic and endoscopic transsphenoidal pituitary surgery: the Egghead. *Acta Neurochir (Wien)* 2015; 157:1771-7; discussion 1777.
3. Jacomet A, Tasman A J. Airway Management in Facial Trauma Patients. *Facial Plast Surg* 2015; 31:319-24.
4. Litschel R, Kühnel T S, Weber R. Frontobasal Fractures. *Facial Plast Surg* 2015; 31:332-44.
5. Litschel R, Siano M, Tasman A J, Cogliatti S B. Nasolacrimal duct obstruction caused by lymphoproliferative infiltration in the course of chronic lymphocytic leukemia. *Allergy Rhinol (Providence)* 2015; 6:191-4.
6. Litschel R, Suárez G A. Management of Zygomatic Fractures: Bone and Arch. *Facial Plast Surg* 2015; 31:368-75.
7. Litschel R, Tasman A J. Contemporary Management of Facial Trauma. *Facial Plast Surg* 2015; 31:317-8.
8. Maquieira R, Haerle S K, Huber G F, Soltermann A, Haile S R, Stöckli S, Broglie Däppen M. No benefit for regional control and survival by planned neck dissection in primary irradiated oropharyngeal cancer irrespective of p16 expression. *Eur Arch Otorhinolaryngol* 2015;.

9. Mast G, Ehrenfeld M, Cornelius C P, Litschel R, Tasman A J. Maxillofacial Fractures: Midface and Internal Orbit-Part I: Classification and Assessment. *Facial Plast Surg* 2015; 31:351-6.
10. Mast G, Ehrenfeld M, Cornelius C P, Tasman A J, Litschel R. Maxillofacial Fractures: Midface and Internal Orbit-Part II: Principles and Surgical Treatment. *Facial Plast Surg* 2015; 31:357-67.
11. Mukherjee R, Öhlschlegel C, Litschel R. [Orbital mass in a 23 years old male patient]. *Laryngorhinootologie* 2015; 94:690-1.
12. Niederer-Wuest S, Jochum W, Förbs D, Brändle M, Bilz S, Clerici T, Oettli R, Müller J, Haile S, Ess S, Stöckli S, Broglie Däppen M. Impact of clinical risk scores and BRAF V600E mutation status on outcome in papillary thyroid cancer. *Surgery* 2015; 157:119-25.
13. Niederer-Wuest S, Rosenfeld J. Tinnitus – Abklärung und Therapie für den Praktiker: Tinnitus-Patienten anhören und ernst nehmen. *Hausarzt Praxis* 2015; 10:2-5.
14. Schilling C, Stöckli S, Haerle S K, Broglie Däppen M, Huber G F, Sorensen J A, Bakholdt V, Krogdahl A, von Buchwald C, Bilde A, Sebbesen L R, Odell E, Gurney B, O'Doherty M, de Bree R, Bloemena E, Flach G B, Villarreal P M, Fresno Forcelledo M F, Junquera Gutiérrez L M, Amézaga J A, Barbier L, Santamaría-Zuazua J, Moreira A, Jacome M, Vigili M G, Rahimi S, Tartaglione G, Lawson G, Nollevaux M C, Grandi C, Donner D, Bragantini E, Dequanter D, Lothaire P, Poli T, Silini E M, Sesenna E, Dolivet G, Mastronicola R, Leroux A, Sassoon I, Sloan P, McGurk M. Sentinel European Node Trial (SENT): 3-year results of sentinel node biopsy in oral cancer. *Eur J Cancer* 2015; 51:2777-84.
15. Schoenenberger U, Tasman A J. Adult-onset woakes' syndrome: report of a rare case. *Case Rep Otolaryngol* 2015; 2015:857675.
16. van Schijndel O, Litschel R, Maal T J J, Bergé S J, Tasman A J. Eye tracker based study: Perception of faces with a cleft lip and nose deformity. *J Craniomaxillofac Surg* 2015; 43:1620-5.
17. van Schijndel O, Tasman A J, Litschel R. The Nose Influences Visual and Personality Perception. *Facial Plast Surg* 2015; 31:439-45.
18. Volck A C, Laske R D, Litschel R, Probst R, Tasman A J. Sound localization measured by eye-tracking. *Int J Audiol* 2015; 54:976-83.
19. Volck A C, Suárez G A, Tasman A J. Management of congenital midline nasofrontal masses: case report and review of literature. *Case Rep Otolaryngol* 2015; 2015:159647.
20. Volck AC, Siano M, Broglie Däppen M, Töpfer M, Stöckli S. Das Adenoidzystische-Karzinom. *info@onkologie.ch* 2015; 1:10-12.
21. Zürrer-Härdi U, Siano M, Broglie Däppen M. Knochenmarksversagen bei Tumorinfiltration bei einem Patienten mit Ästhesioneuroblastom, Mantelzell-Non-Hodgkin-Lymphom und Rektumkarzinom. *Schweiz. Krebs Bulletin* 2015; 1:98-101

Wissenschaftliche Artikel

1. Engel D C, Ferrari A, Tasman A J, Schmid R, Schindel R, Haile S R, Mariani L, Fournier J Y. A basic model for training of microscopic and endoscopic transsphenoidal pituitary surgery: the Egghead. *Acta Neurochir (Wien)* 2015; 157:1771-7; discussion 1777.
2. Fournier J Y. Posttraumatischer Panhypopituitarismus. *Swiss Medical Forum* 2015; 2015:303-305.
3. Gautschi O, Corniola M, Joswig H, Smoll N, Chau I, Jucker D, Stienen M N. The timed up and go test for lumbar degenerative disc disease. *Journal of Clinical Neuroscience* 2015;.
4. Joswig H, Fournier J Y, Hildebrandt G, Stienen M N. Sentinel Headache: A Warning Sign Preceding Every Fourth Aneurysmal Subarachnoid Hemorrhage. *American Journal of Neuroradiology* 2015; 36:62-63.
5. Joswig H, Gers B, Dollenmaier G, Heilbronner R, Strahm C. A case of *Capnocytophaga canimorsus* sacral abscess in an immunocompetent patient. *Infection* 2015; 43:217-221.
6. Joswig H, Schönenberger U, Brügge D, Richter H, Surbeck W. Reversible pure word deafness due to inferior colliculi compression by a pineal germinoma in a young adult. *Clinical Neurology and Neurosurgery* 2015; 139:62-65.
7. Moser M, Hildebrandt G. Remote Cerebellar Hemorrhage after Supratentorial Burr-Hole Trepanation for Unilateral Chronic Subdural Hematoma: Case Report. *NMC Case Report Journal* 2015; 2:114-117.
8. Seule M, Brunner T, Mack A, Hildebrandt G, Fournier J Y. Neurosurgical and Intensive Care Management of Traumatic Brain Injury. *Facial Plast Surg* 2015; 31:325-31.
9. Seule M, Keller E, Unterberg A, Sakowitz O. The Hemodynamic Response of Spreading Depolarization Observed by Near Infrared Spectroscopy After Aneurysmal Subarachnoid Hemorrhage. *Neurocrit Care* 2015; 23:108-12.
10. Stienen M N, Hildebrandt G. Intracranial Aneurysm Rupture is predicted by measures of solar activities. *World Neurosurgery* 2015;.
11. Stienen M N, Joswig H, Hildebrandt G. Anterior cervical discectomy and fusion: is surgical education safe? *Acta Neurochirurgica* 2015; Published Online:.
12. Stienen M N, Weissaupt R, Fandino J, Hildebrandt G, Studerus-Germann A, Schatlo B. Characteristics of patients without neuropsychological deficits following aneurysmal subarachnoid haemorrhage. *Acta Neurochir Suppl* 2015; 120:125-9.
13. Surbeck W, Herbet G, Duffau H. Sexuality after surgery for diffuse low-grade glioma. *Neuro-oncology* 2015; 17:574-9.

Neurologie

Buch

1. Tettenborn B ; Reimers C D ; Reuter I ; Brooks A ; Thürauf N ; Knapp G: Prävention und Therapie durch Sport : Band 2: Neurologie, Psychiatrie/Psychosomatik, Schmerzsyndrome. 2. München: Elsevier, Urban & Fischer, 2015.- ISBN 978-3-437-24265-6

Buchkapitel

1. Felbecker A ; Tettenborn B ; Reimers C D ; Knapp G: Kognitive Störungen. In: Prävention und Therapie durch Sport. München : Elsevier, Urban & Fischer, 2015.- ISBN 978-3-437-24265-6, S. 315-354
2. Galovic M ; Tettenborn B: Epilepsie. In: Prävention und Therapie durch Sport. München : Elsevier, Urban & Fischer, 2015.- ISBN 978-3-437-24265-6, S. 113-123
3. Tettenborn B ; Reimers C D ; Reuter I: Zusammenfassung der Evidenzlevel: neurologische Erkrankungen. In: Prävention und Therapie durch Sport. München : Elsevier, Urban & Fischer, 2015.- ISBN 978-3-437-24265-6, S. 302
4. Tettenborn B: Schlafstörungen. In: Prävention und Therapie durch Sport. München : Elsevier, Urban & Fischer, 2015.- ISBN 978-3-437-24265-6, S. 537-542

Wissenschaftliche Artikel

1. Brugger F, Abela E, Haegele-Link S, Bohlhalter S, Galovic M, Kägi G. Do executive dysfunction and freezing of gait in Parkinson's disease share the same neuroanatomical correlates? *J Neurol Sci* 2015;.
2. Brugger F, Galovic M, Weder B J, Kägi G. Supplementary Motor Complex and Disturbed Motor Control - a Retrospective Clinical and Lesion Analysis of Patients after Anterior Cerebral Artery Stroke. *Front Neurol* 2015; 6:209.
3. Brugger F, Jesus S, Ganos C, Bhatia K P. Episodic akinesia of jaw movements akin to freezing in multiple system atrophy. *Parkinsonism Relat Disord* 2015; 21:1483-4.
4. Büchele F, Morawska M M, Schreglmann S, Penner M, Muser M, Baumann C R, Noain D. Novel rat model of weight drop-induced closed diffuse traumatic brain injury compatible with electrophysiological recordings of vigilance states. *J Neurotrauma* 2015;.
5. Desax M C, Hundsberger T, Rothermundt C, Omlin A, Gillessen Sommer S. Restless Legs Syndrome—An Emerging Potential Side Effect of Enzalutamide: Report of 2 Cases. *Clin Genitourin Cancer* 2015; 13:e385-6.

6. Engeler D, Meyer D, Abt D, Müller S, Schmid H P. Sacral neuromodulation for the treatment of neurogenic lower urinary tract dysfunction caused by multiple sclerosis: a single-centre prospective series. *BMC Urol* 2015; 15:105.
7. Epprecht L, Schreglmann S, Goetze O, Woitalla D, Baumann C R, Waldvogel D. Unchanged gastric emptying and visceral perception in early Parkinson's disease after a high caloric test meal. *J Neurol* 2015; 262:1946-53.
8. Felbecker A. Neurologische Krankheitsbilder am Fuss. *Leading opinions Orthopädie und Rheumatologie* 2015; 4:25-28.
9. Flügel D, Kim O C H, Felbecker A, Tettenborn B. De novo status epilepticus with isolated aphasia. *Epilepsy Behav* 2015; 49:198-202.
10. Goeggel Simonetti B, Mono M L, Huynh-Do U, Michel P, Odier C, Sztajzel R, Lyrer P, Engelter S T, Bonati L, Gensicke H, Traenka C, Tettenborn B, Weder B, Fischer U, Galimanis A, Jung S, Luedi R, De Marchis G M, Weck A, Cereda C W, Baumgartner R, Bassetti C L, Mattle H P, Nedeltchev K, Arnold M. Risk factors, aetiology and outcome of ischaemic stroke in young adults: the Swiss Young Stroke Study (SYSS). *J Neurol* 2015; 262:2025-32.
11. Haegele-Link S, Tettenborn B. Die Parkinson-Erkrankung ist nicht heilbar aber behandelbar. *der informierte @rzt* 2015; 10.2015:24-26.
12. Haegele-Link S. Welche Grundlagen gelten für die Hirntod-Diagnostik in der Schweiz? *medizinonline.ch* 2015; 4:26-27.
13. Hundsberger T, Hottinger A F, Roelcke U, Roth P, Migliorini D, Dietrich P Y, Conen K, Pesce G, Hermann E, Pica A, Gross M W, Brügge D, Plasswilm L, Weller M, Putora P M. Patterns of care in recurrent glioblastoma in Switzerland: a multicentre national approach based on diagnostic nodes. *J Neurooncol* 2015; 126:175-83.
14. Hundsberger T, Hottinger A F. Behandlungsoptionen von Hirnmetastasen : Neue Optionen durch orale und molekulare Therapeutika. *info@onkologie* 2015; 5:5-7.
15. Korfel A, Thiel E, Martus P, Möhle R, Griesinger F, Rauch M, Röth A, Hertenstein B, Fischer T, Hundsberger T, Mergenthaler H G, Junghanß C, Birnbaum T, Fischer L, Jahnke K, Herrlinger U, Roth P, Bamberg M, Pietsch T, Weller M. Randomized phase III study of whole-brain radiotherapy for primary CNS lymphoma. *Neurology* 2015; 84:1242-8.
16. Leupold D, Krammer W, Dollmaier G, Hundsberger T. Neurologische Aspekte bei HIV und Syphilis: Wie manifestieren sich die Infektionserkrankungen am Nervensystem. *InFo Neurologie & Psychiatrie* 2015; 13:2-7.
17. Mahlkecht P, Iranzo A, Högl B, Frauscher B, Müller C, Santamaría J, Tolosa E, Serradell M, Mitterling T, Gschliesser V, Goebel G, Brugger F, Scherfler C, Poewe W, Seppi K, Sleep Innsbruck Barcelona Group . Olfactory dysfunction predicts early transition to a Lewy body disease in idiopathic RBD. *Neurology* 2015; 84:654-8.

18. Müller K, Henke G, Pietschmann S, van Gool S, De Vleeschouwer S, von Bueren A O, Compter I, Friedrich C, Matuschek C, Klautke G, Kortmann R D, Hundsberger T, Baumert B G. Re-irradiation or re-operation followed by dendritic cell vaccination? Comparison of two different salvage strategies for relapsed high-grade gliomas by means of a new prognostic model. *J Neurooncol* 2015; 124:325-32.
19. Putora P M, Ess S, Panje C, Hundsberger T, van Leyen K, Plasswilm L, Früh M. Prognostic significance of histology after resection of brain metastases and whole brain radiotherapy in non-small cell lung cancer (NSCLC). *Clin Exp Metastasis* 2015; 32:143-9.
20. Schreglmann S, Baumann C R, Waldvogel D. Mirror Writing Tremor: Dystonic Clues.... *Movement Disorders Clinical Practice* 2015; 2:316-317.
21. Schreglmann S, Regensburger M, Rockenstein E, Masliah E, Xiang W, Winkler J, Winner B. The temporal expression pattern of alpha-synuclein modulates olfactory neurogenesis in transgenic mice. *PLoS ONE* 2015; 10:e0126261.
22. Seiffge D J, Hooff R J, Nolte C H, Béjot Y, Turc G, Ikenberg B, Berge E, Persike M, Dequatre-Ponchelle N, Strbian D, Pfeilschifter W, Zini A, Tveiten A, Næss H, Michel P, Sztajzel R, Luft A, Gensicke H, Traenka C, Hert L, Scheitz J F, De Marchis G M, Bonati L H, Peters N, Charidimou A, Werring D J, Palm F, Reinhard M, Niesen W D, Nagao T, Pezzini A, Caso V, Nederkoorn P J, Kägi G, von Hessling A, Padjen V, Cordonnier C, Erdur H, Lyrer P A, Brouns R, Steiner T, Tatlisumak T, Engelter S T, NOACISP Study Group* . Recanalization Therapies in Acute Ischemic Stroke Patients: Impact of Prior Treatment With Novel Oral Anticoagulants on Bleeding Complications and Outcome. *Circulation* 2015; 132:1261-9.
23. Siebel P, Berger C, Kägi G. [Telestroke in eastern Switzerland]. *Ther Umsch* 2015; 72:557-60.
24. Simonetti B G, Mono M L, Huynh-Do U, Michel P, Odier C, Sztajzel R, Lyrer P, Engelter S T, Bonati L, Gensicke H, Traenka C, Tettenborn B, Weder B, Fischer U, Galimanis A, Jung S, Luedi R, De Marchis G M, Weck A, Cereda C W, Baumgartner R, Bassetti C L, Mattle H P, Nedeltchev K, Arnold M. Erratum to: Risk factors, aetiology and outcome of ischaemic stroke in young adults: the Swiss Young Stroke Study (SYSS). *J Neurol* 2015;.
25. Tettenborn B, Haegele-Link S. Spinal Cord Disorders. *Eur Neurol* 2015; 74:141-6.
26. Tettenborn B, Mehnert S, Reuter I. Sportverletzungen peripherer Nerven. *Klin Neurophysiol* 2015; 46:1-16.

Pathologie

Wissenschaftliche Artikel

1. Broglie Däppen M, Jochum W, Förbs D, Schöneegg R, Stöckli S. Brush cytology for the detection of high-risk HPV infection in oropharyngeal squamous cell carcinoma. *Cancer Cytopathol* 2015; 123:732-8.
2. Collaud S, Tischler V, Atanassoff A, Wiedl T, Komminoth P, Öhlschlegel C, Weder W, Soltermann A. Lung neuroendocrine tumors: correlation of ubiquitinylation and sumoylation with nucleo-cytosolic partitioning of PTEN. *BMC Cancer* 2015; 15:74.
3. Feilchenfeldt J, Varga Z, Siano M, Grabsch H I, Held U, Schuknecht B, Trip A, Hamaguchi T, Gut P, Balague O, Khanfir K, Diebold J, Jochum W, Shoji H, Kushima R, Wagner D, Shimada Y, Cats A, Knuth A, Moch H, Aebi S, Hofer S. Brain metastases in gastro-oesophageal adenocarcinoma: insights into the role of the human epidermal growth factor receptor 2 (HER2). *Br J Cancer* 2015; 113:716-21.
4. Grafmueller S, Manser P, Diener L, Diener P A, Maeder-Althaus X, Maurizi L, Jochum W, Krug H F, Buerki-Thurnherr T, von Mandach U, Wick P. Bidirectional Transfer Study of Polystyrene Nanoparticles across the Placental Barrier in an ex Vivo Human Placental Perfusion Model. *Environ Health Perspect* 2015; 123:1280-6.
5. Guo T, Kouvonen P, Koh C C, Gillet L C, Wolski W E, Röst H L, Rosenberger G, Collins B C, Blum L C, Gillessen Sommer S, Joerger M, Jochum W, Aebersold R. Rapid mass spectrometric conversion of tissue biopsy samples into permanent quantitative digital proteome maps. *Nat Med* 2015; 21:407-13.
6. Horn H, Ziepert M, Wartenberg M, Staiger A M, Barth T F E, Bernd H W, Feller A C, Klapper W, Stuhlmann-Laeisz C, Hummel M, Stein H, Lenze D, Hartmann S, Hansmann M L, Möller P, Cogliatti S B, Pfreundschuh M, Trümper L, Loeffler M, Glass B, Schmitz N, Ott G, Rosenwald A, DSHNHL16 . Different biological risk factors in young poor-prognosis and elderly patients with diffuse large B-cell lymphoma. *Leukemia* 2015; 29:1564-70.
7. Jäckel K, Braschler T, Jochum W, Hülder T, Knechtle B. [How is agonizing leg pain associated with an intrauterine device?]. *Praxis (Bern 1994)* 2015; 104:517-22.
8. Knechtle B, Jäckel K, Rosemann T, Rüst C A, Cogliatti S B. [Sitting just hurts!]. *Praxis (Bern 1994)* 2015; 104:511-5.
9. Knechtle B, Jäckel K, Rosemann T, Rüst C A, Öhlschlegel C. [My Back is Still Hurting!]. *Praxis (Bern 1994)* 2015; 104:581-6.
10. Koehle O, Abt D, Rothermundt C, Öhlschlegel C, Brugnolaro-Friedrich C, Schmid H P. Soft tissue sarcomas of the kidney. *Rare Tumors* 2015; 7:5635.
11. Litschel R, Siano M, Tasman A J, Cogliatti S B. Nasolacrimal duct obstruction caused by lymphoproliferative infiltration in the course of chronic lymphocytic leukemia. *Allergy*

- Rhinol (Providence) 2015; 6:191-4.
12. Maletzki P, Diener P A, Bjasch D, Schmid H P. Primärer neuroendokriner Tumor der Niere. Eine Rarität. *Urologe* 2015; 54:844-8.
 13. Mukherjee R, Öhlschlegel C, Litschel R. [Orbital mass in a 23 years old male patient]. *Laryngorhinootologie* 2015; 94:690-1.
 14. Niederer-Wuest S, Jochum W, Förbs D, Brändle M, Bilz S, Clerici T, Oettli R, Müller J, Haile S, Ess S, Stöckli S, Broglie Däppen M. Impact of clinical risk scores and BRAF V600E mutation status on outcome in papillary thyroid cancer. *Surgery* 2015; 157:119-25.
 15. Regan M M, Pagani O, Francis P A, Fleming G F, Walley B A, Kammler R, Dell'Orto P, Russo L, Szóke J, Doimi F, Villani L, Pizzolitto S, Öhlschlegel C, Sessa F, Peg Cámara V, Rodríguez Peralto J L, MacGrogan G, Colleoni M, Goldhirsch A, Price K N, Coates A S, Gelber R D, Viale G, SOFT and TEXT Investigators and International Breast Cancer Study Group . Predictive value and clinical utility of centrally assessed ER, PgR, and Ki-67 to select adjuvant endocrine therapy for premenopausal women with hormone receptor-positive, HER2-negative early breast cancer: TEXT and SOFT trials. *Breast Cancer Res Treat* 2015;.
 16. Saladin C, Haueisen H, Kampmann G, Öhlschlegel C, Seifert B, Rageth L, Rageth C, Stadlmann S, Kubik-Huch R A, MIBB Group . Lesions with unclear malignant potential (B3) after minimally invasive breast biopsy: evaluation of vacuum biopsies performed in Switzerland and recommended further management. *Acta Radiol* 2015;.
 17. Savic S, Diebold J, Zimmermann A K, Jochum W, Baschiera B, Grieshaber S, Tornillo L, Bisig B, Kerr K, Bubendorf L. Screening for ALK in non-small cell lung carcinomas: 5A4 and D5F3 antibodies perform equally well, but combined use with FISH is recommended. *Lung Cancer* 2015; 89:104-9.
 18. Schmid C A, Robinson M D, Scheifinger N A, Müller S, Cogliatti S B, Tzankov A, Müller A. DUSP4 deficiency caused by promoter hypermethylation drives JNK signaling and tumor cell survival in diffuse large B cell lymphoma. *J Exp Med* 2015; 212:775-92.
 19. Schmid P, Bregenzer A, Huber M, Rauch A, Jochum W, Müllhaupt B, Vernazza P, Opravil M, Weber R, Swiss HIV Cohort Study . Progression of Liver Fibrosis in HIV/HCV Co-Infection: A Comparison between Non-Invasive Assessment Methods and Liver Biopsy. *PLoS ONE* 2015; 10:e0138838.
 20. Shao S, Guo T, Koh C C, Gillessen Sommer S, Joerger M, Jochum W, Aebersold R. Minimal sample requirement for highly multiplexed protein quantification in cell lines and tissues by PCT-SWATH mass spectrometry. *Proteomics* 2015; 15:3711-21.
 21. Varga Z, Cassoly E, Li Q, Öhlschlegel C, Tapia C, Lehr H A, Klingbiel D, Thürlimann B, Ruhstaller T. Standardization for Ki-67 assessment in moderately differentiated breast cancer. A retrospective analysis of the SAKK 28/12 study. *PLoS ONE* 2015; 10:e0123435.
 22. Wagener R, Aukema S M, Schlesner M, Haake A, Burkhardt B, Claviez A, Drexler H G, Hummel M, Kreuz M, Loeffler M, Rosolowski M, López C, Möller P, Richter J, Rohde M, Betts M J, Russell R B, Bernhart S H, Hoffmann S, Rosenstiel P, Schilhabel M, Szczepanowski M, Trümper L, Klapper W, Siebert R, ICGC MMML-Seq-Project , "Molecular Mechanisms in Malignant Lymphomas" Network Project of the Deutsche

Krebshilfe . The PCBP1 gene encoding poly(rC) binding protein I is recurrently mutated in Burkitt lymphoma. *Genes Chromosomes Cancer* 2015; 54:555-64.

Radiologie und Nuklearmedizin

Wissenschaftliche Artikel

1. Abt D, Mordasini L, Hechelhammer L, Kessler T, Schmid H P, Engeler D. Prospektive, randomisierte Studie. PAE versus TUR-P in der Behandlung der BPH. *Urologik* 2015; 22:10-3.
2. Ampanozi G, Flach P M, Fornaro J, Ross S G, Schweitzer W, Thali M J, Ruder T D. Systematic analysis of the radiologic findings of aortic dissections on unenhanced postmortem computed tomography. *Forensic Sci Med Pathol* 2015; 11:162-7.
3. Cernoch P, Hechelhammer L, von Hessling A, Spross C, Erhardt J, Jost B, Külling F A. Pre-operative embolisation of spinal metastasis: technique, complication rate and outcome-clinical experience. *Int Orthop* 2015; 39:1399-404.
4. Erschbamer M, den Hollander J, Sauter D, Erhardt J, Hechelhammer L, Külling F A. Endovascular embolisation is a successful and safe treatment for post-operative arterial complications after total hip arthroplasty and revision surgery. *Int Orthop* 2015;.
5. Erschbamer M, den Hollander J, Sauter D, Erhardt J, Hechelhammer L, Külling F A. Endovascular embolisation is a successful and safe treatment for post-operative arterial complications after total hip arthroplasty and revision surgery. *International Orthopaedics* 2015;1-6.
6. Gordic S, Desbiolles L, Sedlmair M, Manka R, Plass A, Schmidt B, Husarik D B, Maisano F, Wildermuth S, Alkadhi H, Leschka S. Optimizing radiation dose by using advanced modelled iterative reconstruction in high-pitch coronary CT angiography. *Eur Radiol* 2015;.
7. Hechelhammer L, Abt D, Mordasini L, Muellhaupt G, Schmid H P, Engeler D. To bead or not to bead - Embolisation der Prostataarterien zur Behandlung der BPH. *Schweiz Med Forum* 2015; 15:1188-90.
8. Husarik D B, Gordic S, Desbiolles L, Krauss B, Leschka S, Wildermuth S, Alkadhi H. Advanced virtual monoenergetic computed tomography of hyperattenuating and hypoattenuating liver lesions: ex-vivo and patient experience in various body sizes. *Invest Radiol* 2015; 50:695-702.
9. Meier A, Wurnig M, Desbiolles L, Leschka S, Frauenfelder T, Alkadhi H. Advanced virtual monoenergetic images: improving the contrast of dual-energy CT pulmonary angiography. *Clin Radiol* 2015; 70:1244-51.
10. Mordasini L, Abt D, Engeler D, Hechelhammer L, Schmid H P. Prostatic artery embolization vs. conventional TUR-P in the treatment of benign prostatic hyperplasia - Hintergründe, Vorstellung und erste Erfahrungsberichte einer prospektiven, randomisierten Studie. *German Medical Science, www.egms.de* 2015;.
11. Niederer-Wuest S, Jochum W, Förbs D, Brändle M, Bilz S, Clerici T, Oettli R, Müller J,

- Haile S, Ess S, Stöckli S, Broglie Däppen M. Impact of clinical risk scores and BRAF V600E mutation status on outcome in papillary thyroid cancer. *Surgery* 2015; 157:119-25.
12. Sawatzki M, Brunner W, Neff-Schöb A, Meyenberger C, Borovicka J. Chronische Nausea und Emesis. *Swiss Medical Forum* 2015; 15:1039-1040.
 13. Spross C, Kaestle N, Benninger E, Fornaro J, Erhardt J, Zdravkovic V, Jost B. Deltoid Tuberosity Index: A Simple Radiographic Tool to Assess Local Bone Quality in Proximal Humerus Fractures. *Clin Orthop Relat Res* 2015; 473:3038-45.
 14. Staubli S, Gramann T, Schwab C, Semela D, Hechelhammer L, Engeler D, Schmid H P, Abt D, Mordasini L. Life-threatening bleeding from peristomal varices after cystoprostatectomy: multimodal approach in a cirrhotic, encephalopathic patient with severe portal hypertension. *Case Rep Urol* 2015; 2015:785010.
 15. Winklehner A, Gordic S, Lauk E, Frauenfelder T, Leschka S, Alkadhi H, Husarik D B. Automated attenuation-based tube voltage selection for body CTA: Performance evaluation of 192-slice dual-source CT. *Eur Radiol* 2015; 25:2346-53.

Radio-Onkologie

Wissenschaftliche Artikel

1. AC V, Siano M, Broglie Däppen M, Töpfer M, Stöckli S. Das Adenoidzystische-Karzinom. *info@onkologie.ch* 2015; 1:10-12.
2. Engeler D, Putora P M, Schmid H P, Aebersold D. Permanente interstitielle Brachytherapie mit Jod-125. *info@onkologie* 2015; 5:13-5.
3. Engeler D, Schwab C, Thöni A F, Hochreiter W, Prikler L, Suter S, Stucki P, Schiefer J, Plasswilm L, Schmid H P, Putora P M. PSA bounce after (125)I-brachytherapy for prostate cancer as a favorable prognosticator. *Strahlenther Onkol* 2015; 191:787-791.
4. Engeler D, Schwab C, Thöni A, Hochreiter W, Prikler L, Suter S, Stucki P, Schiefer J, Plasswilm L, Schmid H P, Putora P M. PSA bounce after 125J-brachytherapy for prostate cancer as a favorable prognosticator. *Strahlenther Onkol* 2015; 191:787-91.
5. Hundsberger T, Hottinger A F, Roelcke U, Roth P, Migliorini D, Dietrich P Y, Conen K, Pesce G, Hermann E, Pica A, Gross M W, Brügge D, Plasswilm L, Weller M, Putora P M. Patterns of care in recurrent glioblastoma in Switzerland: a multicentre national approach based on diagnostic nodes. *J Neurooncol* 2015; 126:175-83.
6. Joswig H, Schönenberger U, Brügge D, Richter H, Surbeck W. Reversible pure word deafness due to inferior colliculi compression by a pineal germinoma in a young adult. *Clinical Neurology and Neurosurgery* 2015; 139:62-65.
7. Maletzki P, Markart P, Engeler D, Schiefer J, Plasswilm L, Schmid H P, Schwab C. Späte Seed-Migration nach LDR-Brachytherapie der Prostata mit J-125 Permanentimplantaten. *J Urol Urogynäkol* 2015; 22:4-9.
8. Müller K, Henke G, Pietschmann S, van Gool S, De Vleeschouwer S, von Bueren A O, Compter I, Friedrich C, Matuschek C, Klautke G, Kortmann R D, Hundsberger T,

- Baumert B G. Re-irradiation or re-operation followed by dendritic cell vaccination? Comparison of two different salvage strategies for relapsed high-grade gliomas by means of a new prognostic model. *J Neurooncol* 2015; 124:325-32.
9. Panje C, Panje T, Putora P M, Kim S K, Haile S, Aebersold D M, Plasswilm L. Guidance of treatment decisions in risk-adapted primary radiotherapy for prostate cancer using multiparametric magnetic resonance imaging: a single center experience. *Radiat Oncol* 2015; 10:47.
 10. Plasswilm L, Schmid H P, Schwab C, Putora P M. (Neo-) Adjuvante endokrine Therapie des lokoregionär begrenzten Prostatakarzinoms. *J Urol Urogynäkol* 2015; 22:10-5.
 11. Putora P M, Engeler D, Haile S R, Graf N, Buchauer K, Schmid H P, Plasswilm L. Erectile function following brachytherapy, external beam radiotherapy, or radical prostatectomy in prostate cancer patients. *Strahlenther Onkol* 2015;.
 12. Putora P M, Ess S, Panje C, Hundesberger T, van Leyen K, Plasswilm L, Früh M. Prognostic significance of histology after resection of brain metastases and whole brain radiotherapy in non-small cell lung cancer (NSCLC). *Clin Exp Metastasis* 2015; 32:143-9.
 13. Rothermundt C, Bailey A, Cerbone L, Eisen T, Escudier B, Gillissen Sommer S, Grünwald V, Larkin J, McDermott D, Oldenburg J, Porta C, Rini B, Schmidinger M, Sternberg C, Putora P M. Algorithms in the First-Line Treatment of Metastatic Clear Cell Renal Cell Carcinoma-Analysis Using Diagnostic Nodes. *Oncologist* 2015; 20:1028-35.
 14. Schiefer J, Ingulfsen N, Kluckert J, Peters S, Plasswilm L. Measurements of isocenter path characteristics of the gantry rotation axis with a smartphone application. *Med Phys* 2015; 42:1184-92.
 15. Schiefer J. Design and implementation of a "cheese" phantom-based Tomotherapy TLD dose intercomparison. *Strahlentherapie und Onkologie* 2015; 191:855-861.
 16. Schmid H P, Plasswilm L, Schiefer J. Strahlenquellen im Körper bekämpfen den Prostatakrebs. *DUO* 2015;14-7.
 17. Schmid H P, Schiefer J, Plasswilm L. Strahlenquellen im Körper bekämpfen den Prostatakrebs. *Ostschweiz am Sonntag* 2015; 35:19.

Rechtsmedizin

Wissenschaftliche Artikel

1. Ferrara S D, Ananian V, Baccino E, Banczerowski P, Bordignon D, Boscolo-Berto R, Domenici R, Gorriz Quevedo J, Graw M, Hell W, Hernandez Cueto C, Knudsen P J T, Masiero S, Montisci M, Norelli G A, Pinchi V, Raudys R, Raul J S, Sterzik V, Tessitore E, Tuusov J, Vanezis P, Vermylen Y, Vieira D N, Viel G, Viero A, Villanueva E, Zoia R. Whiplash-Associated Disorders : Clinical and medico-legal guidelines on the methods of ascertainment. *Int J Legal Med* 2015; 130:13-22.
2. Ferrara S D, Baccino E, Boscolo-Berto R, Comandè G, Domenici R, Hernandez-Cueto C,

Gulmen M K, Mendelson G, Montisci M, Norelli G A, Pinchi V, Ranavaya M, Shokry D A, Sterzik V, Vermeylen Y, Vieira D N, Viel G, Zoja R, . Padova Charter on personal injury and damage under civil-tort law : Medico-legal guidelines on methods of ascertainment and criteria of evaluation. *Int J Legal Med* 2015; 130:1-12.

3. Giuliani N, Beyer J, Augsburger M, Varlet V. Validation of an analytical method for nitrous oxide (N₂O) laughing gas by headspace gas chromatography coupled to mass spectrometry (HS-GC-MS): forensic application to a lethal intoxication. *J Chromatogr B Analyt Technol Biomed Life Sci* 2015; 983-984:90-3.
4. Hausmann R. Die ärztliche Leichenschau: Was ist zu beachten? *Swiss Medical Forum* 2015;840-847.
5. Laberke P J, Fornaro J, Kim S K, Blum S, Augsburger M, Alkadhi H, Wildermuth S, Hausmann R, Leschka S. Dual-energy CT behavior of heroin, cocaine, and typical adulterants. *Forensic Sci Med Pathol* 2015; 11:20-8.
6. Seidenstuecker M, Kissling S, Ruehe J, Suedkamp N P, Mayr H O, Bernstein A. Novel Method for Loading Microporous Ceramics Bone Grafts by Using a Directional Flow. *J Funct Biomater* 2015; 6:1085-98.
7. Sterzik V, Babel B, Augustin A M, Bohnert M. Kaffeegenuss mit anticholinergen Nebenwirkungen. *Rechtsmedizin* 2015;.
8. Sterzik V, Panzer S, Apfelbacher M, Bohnert M. Searching for biological traces on different materials using a forensic light source and infrared photography. *Int J Legal Med* 2015;.

Zentrale Notfallaufnahme

Wissenschaftliche Artikel

1. Sieber R, Osterwalder J. Treatment algorithm reduces oxygen use in the Emergency Department. *Eur J Emerg Med* 2015;.
2. Kherbeche H, Osterwalder J, Exer N, Schuhwerk W, Ummenhofer W. Chest compression using the foot or hand method: a prospective, randomized, controlled manikin study with school children. *Eur J Emerg Med* 2015; 2015 epub ahead of print:.
3. Beun L, Yersin B, Osterwalder J, Carron P N. Pulseless electrical activity cardiac arrest: time to amend the mnemonic "4H&4T"? *Swiss Med Wkly* 2015; 145:w14178.
4. Janczak J M, Beutner U, Hasler K. Body packing: from seizures to laparotomy. *Case Rep Emerg Med* 2015; 2015:208047.

Dermatologie/Allergologie

Wissenschaftliche Artikel

1. Cazzaniga S, Ballmer-Weber B K, Gräni N, Spring P, Bircher A, Anliker M D, Sonntag A K, Piletta P, Huber C, Borradori L, Diepgen T, Apfelbacher C, Simon D. Medical, psychological and socio-economic implications of chronic hand eczema: a cross-sectional study. *J Eur Acad Dermatol Venereol* 2015;.
2. Boehncke W H, Anliker M D, Conrad C, Dudler J, Hasler F, Hasler P, Häusermann P, Kyburz D, Laffitte E, Michel B A, Möller B, Navarini A A, Villiger P M, Yawalkar N, Gabay C. The dermatologists' role in managing psoriatic arthritis: results of a Swiss Delphi exercise intended to improve collaboration with rheumatologists. *Dermatology (Basel)* 2015; 230:75-81.
3. Jaeger T, Rothmaier M, Zander H, Ring J, Gutermuth J, Anliker M D. Acid-coated Textiles (pH 5.5-6.5)--a New Therapeutic Strategy for Atopic Eczema? *Acta Derm Venereol* 2015; 95:659-63.
4. Sommerstein R, Flatz L, Remy M M, Malinge P, Magistrelli G, Fischer N, Sahin M, Bergthaler A, Igonet S, Ter Meulen J, Rigo D, Meda P, Rabah N, Coutard B, Bowden T A, Lambert P H, Siegrist C A, Pinschewer D D. Arenavirus Glycan Shield Promotes Neutralizing Antibody Evasion and Protracted Infection. *PLoS Pathog* 2015; 11:e1005276.
5. Demaria O, De Gassart A, Coso S, Gestermann N, Di Domizio J, Flatz L, Gaide O, Michielin O, Hwu P, Petrova T V, Martinon F, Modlin R L, Speiser D E, Gilliet M. STING activation of

tumor endothelial cells initiates spontaneous and therapeutic antitumor immunity. Proc Natl Acad Sci USA 2015; 112:15408-13.

6. Bhattacharya A, Hegazy A N, Deigendesch N, Kosack L, Cupovic J, Kandasamy R K, Hildebrandt A, Merkler D, Kühl A A, Vilagos B, Schliehe C, Panse I, Khamina K, Baazim H, Arnold I, Flatz L, Xu H C, Lang P A, Aderem A, Takaoka A, Superti-Furga G, Colinge J, Ludewig B, Löhning M, Bergthaler A. Superoxide Dismutase 1 Protects Hepatocytes from Type I Interferon-Driven Oxidative Damage. Immunity 2015; 43:974-86.
7. Johnson S, Bergthaler A, Graw F, Flatz L, Bonilla W V, Siegrist C A, Lambert P H, Regoes R R, Pinschewer D D. Protective efficacy of individual CD8+ T cell specificities in chronic viral infection. J Immunol 2015; 194:1755-62.

Brustzentrum

Wissenschaftliche Artikel

1. Bernhard J, Luo W, Ribí K, Colleoni M, Burstein H J, Tondini C, Pinotti G, Spazzapan S, Ruhstaller T, Puglisi F, Pavesi L, Parmar V, Regan M M, Pagani O, Fleming G F, Francis P A, Price K N, Coates A S, Gelber R D, Goldhirsch A, Walley B A. Patient-reported outcomes with adjuvant exemestane versus tamoxifen in premenopausal women with early breast cancer undergoing ovarian suppression (TEXT and SOFT): a combined analysis of two phase 3 randomised trials. Lancet Oncol 2015; 16:848-58.
2. Coates A S, Winer E P, Goldhirsch A, Gelber R D, Gnant M, Piccart-Gebhart M, Thürlimann B, Senn H J, Panel members . -Tailoring therapies-improving the management of early breast cancer: St Gallen International Expert Consensus on the Primary Therapy of Early Breast Cancer 2015. Ann Oncol 2015; 26:1533-46.
3. Early Breast Cancer Trialists' Collaborative Group (EBCTCG) , Dowsett M, Forbes J F, Bradley R, Ingle J, Aihara T, Bliss J, Boccardo F, Coates A, Coombes R C, Cuzick J, Dubsky P, Gnant M, Kaufmann M, Kilburn L, Perrone F, Rea D, Thürlimann B, van de Velde C, Pan H, Peto R, Davies C, Gray R. Aromatase inhibitors versus tamoxifen in early breast cancer: patient-level meta-analysis of the randomised trials. Lancet 2015; 386:1341-52.
4. Gourgou-Bourgade S, Cameron D, Poortmans P, Asselain B, Azria D, Cardoso F, A'Hern R, Bliss J, Bogaerts J, Bonnefoi H, Brain E, Cardoso M J, Chibaudel B, Coleman R, Cufer T, Dal Lago L, Dalenc F, De Azambuja E, Debled M, Delaloge S, Filleron T, Gligorov J, Gutowski M, Jacot W, Kirkove C, Macgrogan G, Michiels S, Negreiros I, Offersen B V, Penault Llorca F, Pruneri G, Roche H, Russell N S, Schmitt F, Servent V, Thürlimann B, Untch M, van der Hage J A, van Tienhoven G, Wildiers H, Yarnold J, Bonnetain F, Mathoulin-Pélissier S, Bellera C, Dabakuyo-Yonli T S. Guidelines for time-to-event end point definitions in breast cancer trials: results of the DATECAN initiative (Definition for the Assessment of Time-to-event Endpoints in CANcer trials)†. Ann Oncol 2015; 26:873-9.

5. Hadji P, Coleman R E, Wilson C, Powles T J, Clézardin P, Aapro M, Costa L, Body J J, Markopoulos C, Santini D, Diel I, Di Leo A, Cameron D, Dodwell D, Smith I, Gnant M, Gray R, Harbeck N, Thürlimann B, Untch M, Cortes J, Martin M, Albert U S, Conte P F, Ejlertsen B, Bergh J, Kaufmann M, Holen I. Adjuvant bisphosphonates in early breast cancer: Consensus guidance for clinical practice from a European Panel. *Ann Oncol* 2015;.
6. Herrmann C, Ess S, Thürlimann B, Probst-Hensch N, Vounatsou P. 40 years of progress in female cancer death risk: a Bayesian spatio-temporal mapping analysis in Switzerland. *BMC Cancer* 2015; 15:666.
7. Leyland-Jones B, Gray K P, Abramovitz M, Bouzyk M, Young B, Long B, Kammler R, Dell'orto P, Biasi M O, Thürlimann B, Lyng M B, Ditzel H J, Harvey V J, Neven P, Treilleux I, Rasmussen B B, Maibach R, Price K N, Coates A S, Goldhirsch A, Pagani O, Viale G, Rae J M, Regan M M. CYP19A1 polymorphisms and clinical outcomes in postmenopausal women with hormone receptor-positive breast cancer in the BIG 1-98 trial. *Breast Cancer Res Treat* 2015; 151:373-84.
8. Leyland-Jones B, Gray K P, Abramovitz M, Bouzyk M, Young B, Long B, Kammler R, Dell'orto P, Biasi M O, Thürlimann B, Harvey V, Neven P, Arnould L, Maibach R, Price K N, Coates A S, Goldhirsch A, Gelber R D, Pagani O, Viale G, Rae J M, Regan M M, BIG 1-98 Collaborative Group . ESR1 and ESR2 polymorphisms in the BIG 1-98 trial comparing adjuvant letrozole versus tamoxifen or their sequence for early breast cancer. *Breast Cancer Res Treat* 2015; 154:543-55.
9. Metzger Filho O, Giobbie-Hurder A, Mallon E, Gusterson B, Viale G, Winer E P, Thürlimann B, Gelber R D, Colleoni M, Ejlertsen B, Debled M, Price K N, Regan M M, Coates A S, Goldhirsch A. Relative Effectiveness of Letrozole Compared With Tamoxifen for Patients With Lobular Carcinoma in the BIG 1-98 Trial. *J Clin Oncol* 2015; 33:2772-9.
10. Munzone E, Giobbie-Hurder A, Gusterson B A, Mallon E, Viale G, Thürlimann B, Ejlertsen B, Macgrogan G, Bibeau F, Lelkaitis G, Price K N, Gelber R D, Coates A S, Goldhirsch A, Colleoni M, International Breast Cancer Study Group and the BIG 1-98 Collaborative Group . Outcomes of special histotypes of breast cancer after adjuvant endocrine therapy with letrozole or tamoxifen in the monotherapy cohort of the BIG 1-98 trial. *Ann Oncol* 2015;.
11. Peters S, von Moos R, Thürlimann B. [Is prescription of a therapy costing 150,000 CHF reasonable?]. *Rev Med Suisse* 2015; 11:1967-72.
12. Putora P M, Bedenne L, Budach W, Eisterer W, van der Gaast A, Jäger R, Van Lanschot J J B, Mariette C, Schnider A, Stahl M, Ruhstaller T. Oesophageal cancer: exploring controversies overview of experts' opinions of Austria, Germany, France, Netherlands and Switzerland. *Radiat Oncol* 2015; 10:116.
13. Senn H J, Thürlimann B, Gnant M. St.Gallen-2015 in Vienna: News from a successful breast cancer conference transposition! *Breast* 2015;.

14. Toi M, Ohno S, Saeki T, Nakamura S, Thürlimann B. For choosing axillary treatment, and adjuvant hormonal treatment. *Breast Cancer* 2015;.
15. Varga Z, Cassoly E, Li Q, Öhlschlegel C, Tapia C, Lehr H A, Klingbiel D, Thürlimann B, Ruhstaller T. Standardization for Ki-67 assessment in moderately differentiated breast cancer. A retrospective analysis of the SAKK 28/12 study. *PLoS ONE* 2015; 10:e0123435.
16. Zaman K, Winterhalder R, Mamot C, Hasler-Strub U, Rochlitz C, Mueller A, Berset C, Wilidors H, Perey L, Rudolf C B, Hawle H, Rondeau S, Neven P. Fulvestrant with or without selumetinib, a MEK 1/2 inhibitor, in breast cancer progressing after aromatase inhibitor therapy: a multicentre randomised placebo-controlled double-blind phase II trial, SAKK 21/08. *Eur J Cancer* 2015; 51:1212-20.

Muskelzentrum/ALS clinic

Wissenschaftliche Artikel

1. Czell D, Baldinger R, Schneider U, Neuwirth C, Weber M. The role of the SenseWear device and ghrelin for metabolism in amyotrophic lateral sclerosis. *Amyotroph Lateral Scler Frontotemporal Degener* 2015;1-2.
2. Dorst J, Dupuis L, Petri S, Kollwe K, Meyer T, Burkhardt C, Czell D, Weber M, Ludolph A. Percutaneous endoscopic gastrostomy in amyotrophic lateral sclerosis: a prospective observational study. *Journal of Neurology* 2015; [Epub ahead of print]:.
3. Neuwirth C, Barkhaus P E, Burkhardt C, Castro J, Czell D, de Carvalho M, Nandedkar S, Stålberg E, Weber M. Tracking motor neuron loss in a set of six muscles in amyotrophic lateral sclerosis using the Motor Unit Number Index (MUNIX): a 15-month longitudinal multicentre trial. *J Neurol Neurosurg Psychiatr* 2015; 86:1172-9.

Institut für Immunbiologie

Wissenschaftliche Artikel

1. Bhattacharya A, Hegazy A N, Deigendesch N, Kosack L, Cupovic J, Kandasamy R K, Hildebrandt A, Merkle D, Kühl A A, Vilagos B, Schliehe C, Panse I, Khamina K, Baazim H, Arnold I, Flatz L, Xu H C, Lang P A, Aderem A, Takaoka A, Superti-Furga G, Colinge J, Ludewig B, Löhning M, Bergthaler A. Superoxide Dismutase 1 Protects Hepatocytes from Type I Interferon-Driven Oxidative Damage. *Immunity* 2015; 43:974-86.
2. Bösch M, Zeimet A G, Rumpold H, Gastl G, Sopper S, Wolf D. Drug Transporter-Mediated Protection of Cancer Stem Cells From Ionophore Antibiotics. *Stem Cells Transl Med* 2015;.
3. Kislitsyn A, Savinkov R, Novkovic M, Onder L, Bocharov G. Computational Approach to 3D Modeling of the Lymph Node Geometry. *Computation* 2015; 3:222-234.
4. Mair F, Joller S, Hoeppli R, Onder L, Hahn M, Ludewig B, Waisman A, Becher B. The NF κ B-inducing kinase is essential for the developmental programming of skin-resident and IL-17-producing $\gamma\delta$ T cells. *Elife* 2015; 4:.
5. Onder L, Ludewig B. Another TLO in the Wall: Education and Control of T Cells in Atherosclerotic Arteries. *Immunity* 2015; 42:981-3.
6. Onder L, Nindl V, Scandella E, Chai Q, Cheng H W, Caviezel-Firner S, Novkovic M, Bomze D, Maier R, Mair F, Ledermann B, Becher B, Waisman A, Ludewig B. Alternative NF- κ B signaling regulates mTEC differentiation from podoplanin-expressing precursors in the cortico-medullary junction. *Eur J Immunol* 2015;.
7. Perez Shibayama C, Ludewig B. Tuning up FALCs: immunological shielding in the body cavities. *Nat Immunol* 2015; 16:796-8.
8. Rodda L B, Bannard O, Ludewig B, Nagasawa T, Cyster J G. Phenotypic and Morphological Properties of Germinal Center Dark Zone Cxcl12-Expressing Reticular

Cells. *J Immunol* 2015; 195:4781-91.

9. Sommerstein R, Flatz L, Remy M M, Malinge P, Magistrelli G, Fischer N, Sahin M, Bergthaler A, Igonet S, Ter Meulen J, Rigo D, Meda P, Rabah N, Coutard B, Bowden T A, Lambert P H, Siegrist C A, Pinschewer D D. Arenavirus Glycan Shield Promotes Neutralizing Antibody Evasion and Protracted Infection. *PLoS Pathog* 2015; 11:e1005276.
10. Demaria O, De Gassart A, Coso S, Gestermann N, Di Domizio J, Flatz L, Gaide O, Michielin O, Hwu P, Petrova T V, Martinon F, Modlin R L, Speiser D E, Gilliet M. STING activation of tumor endothelial cells initiates spontaneous and therapeutic antitumor immunity. *Proc Natl Acad Sci USA* 2015; 112:15408-13.
11. Johnson S, Bergthaler A, Graw F, Flatz L, Bonilla W V, Siegrist C A, Lambert P H, Regoes R R, Pinschewer D D. Protective efficacy of individual CD8+ T cell specificities in chronic viral infection. *J Immunol* 2015; 194:1755-62.

Clinical Trials Unit

Wissenschaftliche Artikel

1. Abt D, Warzinek E, Schmid H P, Haile S, Engeler D. Influence of patient education on morbidity caused by ureteral stents. *Int J Urol* 2015; 22:679-83.
2. Kahlert C R, Bregenzer A, Gutmann C, Otterbech S, Hoffmann M, Schmid P, Vernazza P. Late treatment failures in cerebrospinal fluid in patients on long-term maintenance ART with ritonavir-boosted protease PI monotherapy. *Infection* 2015;.
3. Kraus M, Bader J, Geurink P P, Weyburne E S, Mirabella A C, Silzle T, Shabaneh T B, van der Linden W A, de Bruin G, Haile S, van Rooden E, Appenzeller C, Li N, Kisselev A F, Overkleeft H, Driessen C. The novel β 2-selective proteasome inhibitor LU-102 synergizes with bortezomib and carfilzomib to overcome proteasome inhibitor resistance of myeloma cells. *Haematologica* 2015; 100:1350-60.
4. Müller R, von Kempis J, Haile S, Schiff M H. Effectiveness, tolerability, and safety of subcutaneous methotrexate in early rheumatoid arthritis: A retrospective analysis of real-world data from the St. Gallen cohort. *Semin Arthritis Rheum* 2015; 45:28-34.
5. Niederer-Wuest S, Jochum W, Förbs D, Brändle M, Bilz S, Clerici T, Oettli R, Müller J, Haile S, Ess S, Stöckli S, Broglio Däppen M. Impact of clinical risk scores and BRAF V600E mutation status on outcome in papillary thyroid cancer. *Surgery* 2015; 157:119-25.
6. Onder L, Nindl V, Scandella E, Chai Q, Cheng H W, Caviezel-Firner S, Novkovic M, Bomze D, Maier R, Mair F, Ledermann B, Becher B, Waisman A, Ludewig B. Alternative NF- κ B signaling regulates mTEC differentiation from podoplanin-expressing precursors in the cortico-medullary junction. *Eur J Immunol* 2015;.
7. Panje C, Panje T, Putora P M, Kim S K, Haile S, Aebersold D M, Plasswilm L. Guidance of treatment decisions in risk-adapted primary radiotherapy for prostate cancer using multiparametric magnetic resonance imaging: a single center experience. *Radiat Oncol*

2015; 10:47.

Zentrum für Integrative Medizin

Wissenschaftlicher Artikel/Review

1. Schlaeppli M, Templeton A. Möglichkeiten und Grenzen der Komplementärmedizin in der Onkologie. *Onkologische Pharmazie* 2015; 1:46-50.



Kompetent
Umfassend
Vielseitig

Kantonsspital St.Gallen

Rorschacher Strasse 95

CH-9007 St.Gallen

Tel. +41 71 494 11 11

Spital Rorschach

Heidenerstrasse 11

CH-9400 Rorschach

Tel. +41 71 858 31 11

Spital Flawil

Krankenhausstrasse 23

CH-9230 Flawil

Tel. +41 71 394 71 11

www.kssg.ch